



# MANUAL FUNCTIONAL INTEGRITY

7th Edition

# Contents

## Background information

Safety concepts for buildings	4
Safety concepts for tunnels	6
Testing methods	8
Standards	10
MLAR 11/2005	11
Calculating the required cross-section for functional integrity	12
Core colour-coding	19
Functional integrity	20

## Optional installation techniques grouped by installation type

Multi-cable supports	21
Single clamp	22
horizontal installation	22
vertical installation	22
Strap clamp	23
horizontal installation	23
vertical installation	23
WUM	24
Support measure (vertical installation)	24
In-wall installation	25
Steel-armoured conduits	25
Protective conduits	26
with single clamp	26
with strap clamp	26
Protective cable ducts / Wire mesh cable ducts	27
Unlimited functional integrity	28
Cable trays	29
Cable trays without threaded rod suspension	30

## Optional installation techniques grouped by cable type

Low-voltage cable FE180 / E30-E60	32
Low-voltage cable FE180 / E90	36
JE-H(ST)H FE180 / E30-E90 / JE-H(ST)H FE180 / E30 L	38
JE-H(ST)HRH...Bd FE180 / E30-E90	38
Fibre optic safety cable	40

Please note:

The optional installation techniques only apply to Datwyler cable types with Datwyler installation systems.  
When multiple cables and/or functional integrity classes are combined in a single installation, the lowest values apply!

## Datwyler product range

<b>Overview: Low-voltage cables</b>	<b>42</b>
(N)HXH FE 180 / E30-E60	44
(N)HXH CL FE180 / E30-E60	46
(N)HXCH FE 180 / E30-E60	48
(N)HXH FE 180 / E90	50
(N)HXCH FE 180 / E90	51
<b>Overview: Installation cables</b>	<b>52</b>
JE-H(ST)H...Bd FE 180 / E30-E90 / JE-H(ST)H FE180 / E30 L	53
JE-H(ST)HRH...Bd FE 180 / E30-E90	54
<b>Overview: Fibre optic cables</b>	<b>55</b>
Fibre optic cables E30	55
<b>Clamp assignment</b>	<b>56</b>
Clamps	66
Troughs / multi-cable supports	68
Multi-cable supports / joints	69
Connection box / terminal box	70
Distribution box	71
Concrete plugs	72
Special plugs / Identification signs	74
WUM (support measure)	75

## Assembly instructions

Type SAS single clamp	76
Strap clamp	78
Multi-cable support "Hermann" clamp	80
WUM support measure (vertical installation)	82
E0 multi-cable support	83
VAD outlet	85
Hercules cover	86
Hercules terminal box	87
Assorted plugs	88
K6x5 plug	90
KDM plug for „Hermann“ clamp	90
KDM plug for profile rail	91
MMS-ST mounting screw	92
HMS mounting screw	92
MMS mounting screw	93
PBD gas concrete plug	93

## FAQ

FAQ	94
-----	----

# SAFETY CONCEPTS FOR BUILDINGS

## Proven quality

Datwyler Cabling Solutions is the first European manufacturer to develop a complete system solution that meets the demands of today's industry for reliable power supply and data transmission in the event of fire. Datwyler cables and our approved cabling system components are the result of many years of intensive development in coordination with the relevant standardisation bodies.

Selected raw materials and special compounds in combination with unique installation methods are what give a Datwyler system its high quality and maximum guaranty of safety in the event of fire.

Datwyler cables and safety system components are used wherever people, machinery and equipment are endangered by fire and smoke emission: in buildings with high density of occupants as well as in facilities containing large concentrations of valuable property.

Our safety cable systems have to be highly reliable when it comes to practical operations. This is why Datwyler measures each and every product against strict quality standards before it leaves the company. Specifically, this means that all processes are integrated into the comprehensive management system in accordance with ISO 9001 and ISO 14001. Beyond this, additional application-specific inspection and test methods ensure that Datwyler cables and safety cable systems exceed the requirements of our customers as well as the stringent standards specified by the various countries in which our products are used.

**Steel conduits and halogen-free plastic conduits**



**Fire protection plugs F90**  
installation depth 30 mm



**Single clamps**  
type SAS



**Gas concrete plugs**  
F90



**Screws F90**

**Strap clamps**  
type B,  
without trough



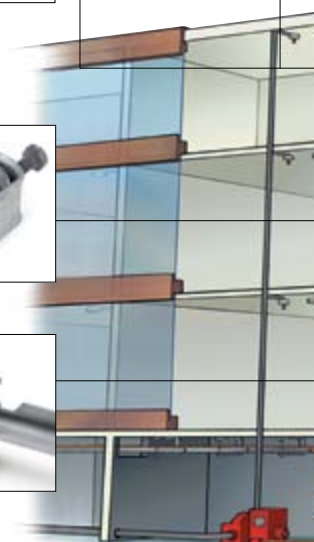
**Strap clamps**  
type B,  
with trough

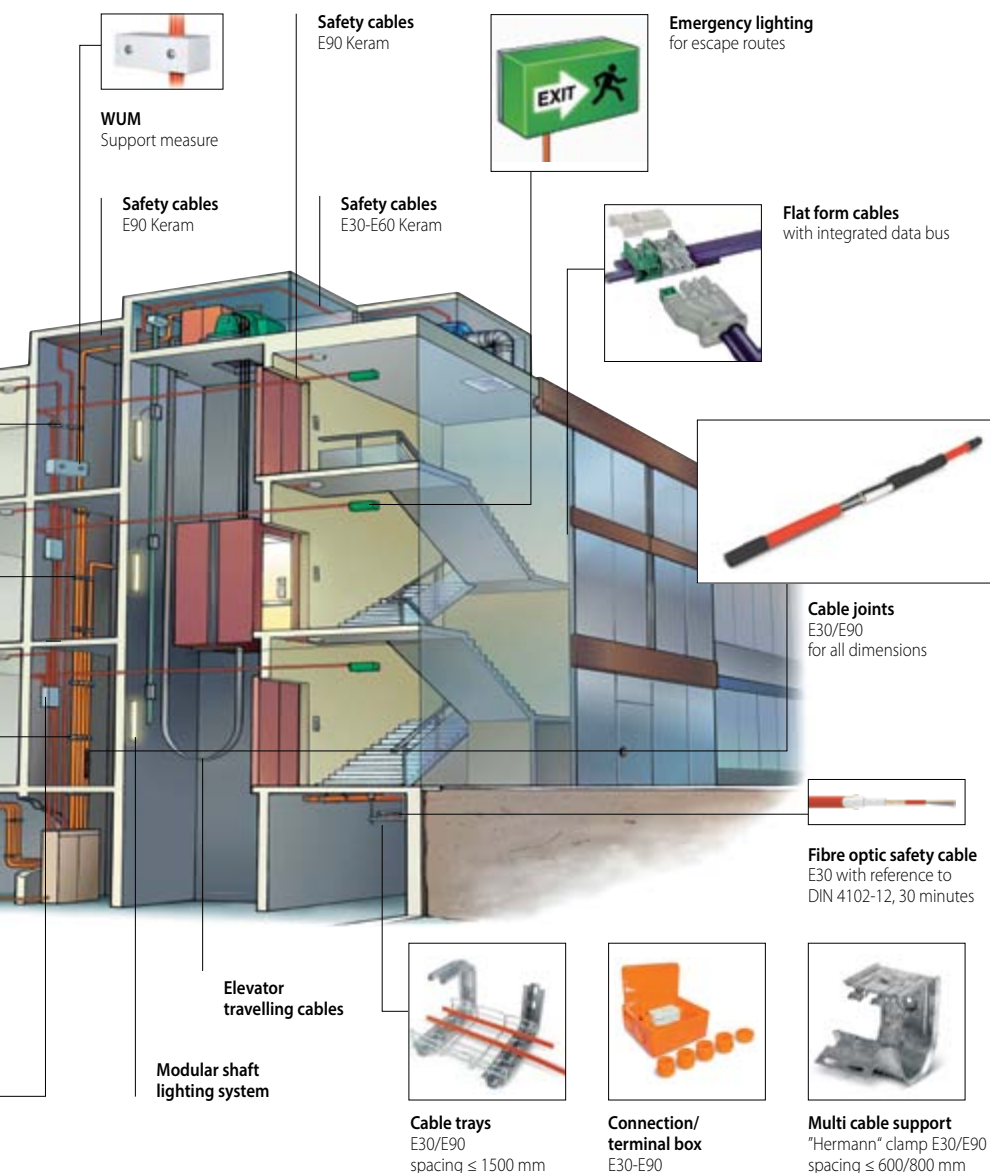


**Identification signs**



**Distribution box**  
E30-E90  
type "Hercules"





# SAFETY CONCEPTS FOR TUNNELS

1. Background Information

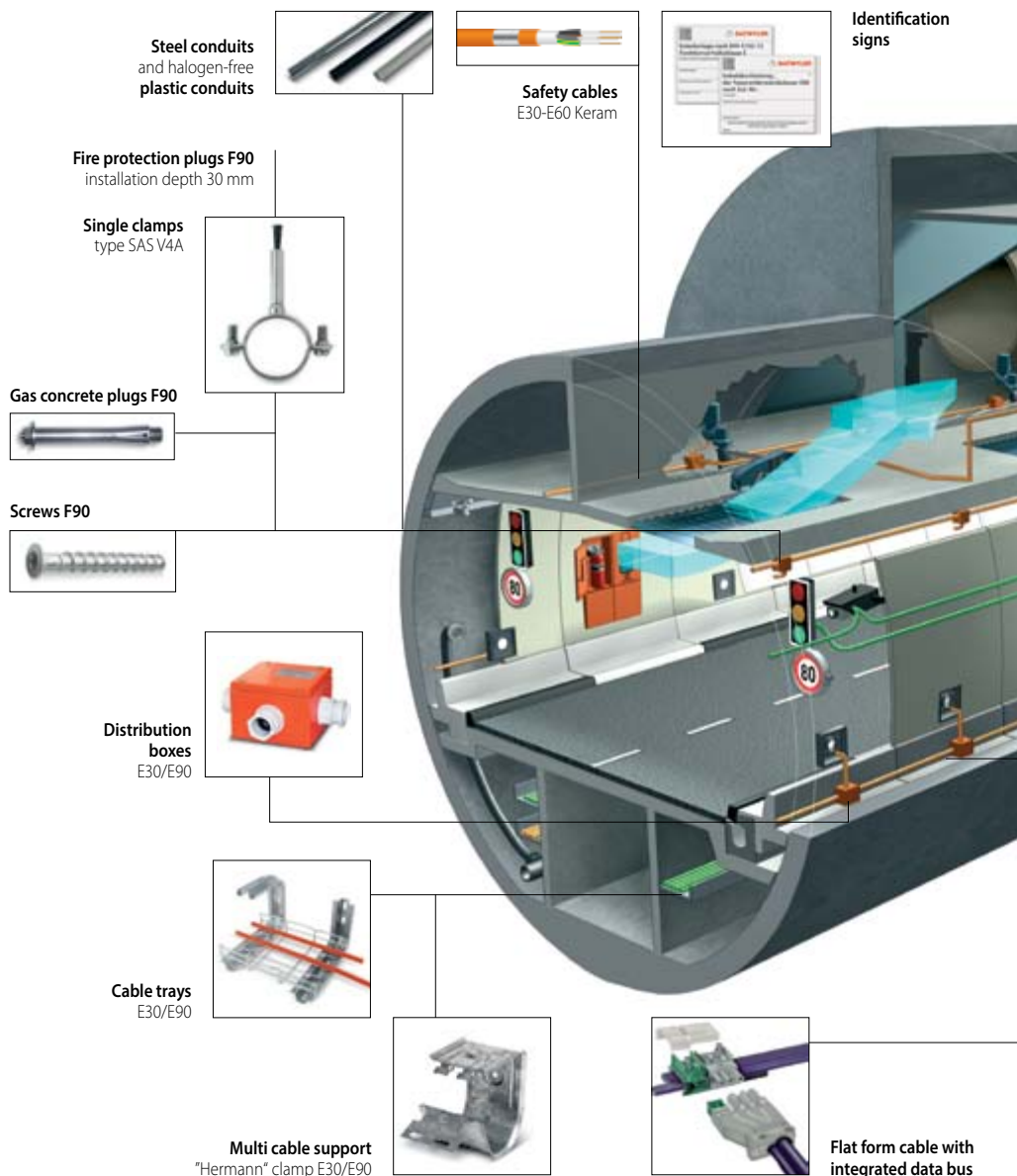
2. By Installation Type

3. By Cable Type

4. Product Range

5. Assembly Instructions

6. FAQ





**Fibre optic safety cable**  
E30 with reference to  
DIN 4102-12, 30 minutes



**Cable joints E30/E90**  
for all dimensions



**Distribution box**  
E30-E90  
type "Hercules"



**Strap clamps**  
type B,  
without trough



**Strap clamps**  
type B,  
with trough



**Emergency lighting**  
for escape routes

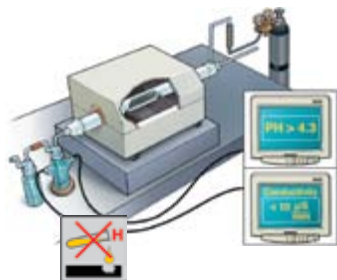
**Safety cables**  
E30-E90 Keram

**Fibre optic safety cable**  
E30 with reference to  
DIN 4102-12, 30 minutes

# TESTING METHODS

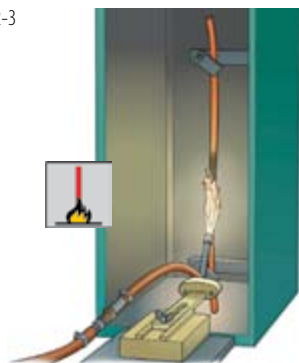
Experience, expertise, competency, quality and safety

## Fire behaviour



### Corrosiveness test of fumes

- IEC 60754-1 and IEC 60754-2
- EN 50267-2-1, EN 50267-2-2
- EN 50267-2-3
- VDE 0482-267 part 2-1, 2-2 and 2-3



### Fire behaviour test of single leads or cables

- IEC 60332-1-2
- EN 60332-1-2
- VDE 0482-332-1-2



### Fire behaviour test of cable bundles

- IEC 60332-3-22 up to 25 Cat A-D
- EN 60332-3-22 up to 25 Cat. A-D
- VDE 0482-332-3-22 up to 25 Cat. A-D



### Smoke density test

- IEC 61034-1 and IEC 61034-2
- EN 61034-1 and EN 61034-2
- VDE 0482-1034 part 1 and 2

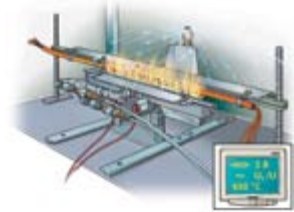
Experience, expertise, competency, quality and safety

Electrical functionality when exposed to fire



## Testing for insulation integrity

- IEC 60331 part 21, 23 and 25 [ $>750^{\circ}\text{C}$ , 2A]
- BS 6387 (cat.C) [ $950^{\circ}\text{C}$ , 3A]
- VDE 0472-814 [ $>750^{\circ}\text{C}$ , 3A]



## Testing for insulation integrity (fire and water)

- BS 6387 (cat.W) [ $650^{\circ}\text{C}$ , 3A]
- VdS 3423 [ $>830^{\circ}\text{C}$ , 3A]
- EN 50200 Annex E [ $>830^{\circ}\text{C}$ , 2A]



## Testing for insulation integrity (fire and impact)

- IEC 60331-1/-2 [ $>830^{\circ}\text{C}$ , 2A]
- EN 50200 (PH) [ $>830^{\circ}\text{C}$ , 2A]
- EN 50362 [ $>830^{\circ}\text{C}$ , 2A]
- BS 6387 (cat.Z) [ $950^{\circ}\text{C}$ , 3A]

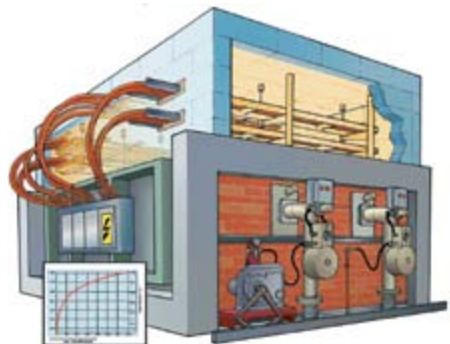


## Testing for functional or system circuit integrity of electrical cable systems

- DIN 4102 part 12 (E30-E90)
- NBN 713-020 (Rf1, Rf1 $\frac{1}{2}$ )

### Better than standard!

This test is the only reliable global standard for ensuring the functional integrity or system circuit integrity (E30-E90) of an entire electrical cable system together with fastener components under real-life conditions.



# STANDARDS

## Standards for cables

1. Background Information

2. By Installation Type

3. By Cable Type

4. Product Range

5. Assembly Instructions

6. FAQ



Zero halogen,  
non corrosive  
gases

These Datwyler cables are halogen-free and reduce possible damage to health or material to a minimum.

IEC 60754-1 and  
IEC 60754-2,  
EN 50267-2-1, EN 50267-2-2,  
EN 50267-2-3  
VDE 0482-267 part 2-1, 2-2  
and 2-3



Flame propagation

These Datwyler cables use a high-performance, flame retardant material that is self-extinguishing.

IEC 60332-1-2,  
EN 60332-1-2,  
VDE 0482-332-1-2



Flame spread

These Datwyler cables are flame resistant and prevent the propagation of a fire from one location to another

IEC 60332-3-22  
up to 25 Cat. A-D,  
EN 60332-3-22  
up to 25 Cat. A-D,  
VDE 0482-332-3-22  
up to 25 Cat. A-D



Smoke density

These Datwyler cables emit minimum smoke in the event of fire. Exit routes and fire brigade access are not restricted.

IEC 61034-1 and  
IEC 61034-2,  
EN 61034-1 and  
EN 61034-2,  
VDE 0482-1034 part 1 and 2



Circuit integrity  
(FE/PH)

These Datwyler cables with circuit integrity guarantee the function of a single cable for a defined duration. (FE = flame time and influence time)

IEC 60331-1, IEC 60331-2  
and part 21, 23, 25,  
EN 50200 with Annex E,  
EN 50362,  
VDE 0472 part 814,  
VDE 0482-200,  
VDE 0482-362,  
BS 8434-2, BS 6387  
(Cat. C/W/Z)



System circuit  
integrity  
(E30-E90)

These Datwyler cables together with certified Datwyler fixing systems guarantee enhanced circuit integrity of the complete electrical cable installation for a defined time. (E30=30 minutes, E60=60 minutes, E90=90 minutes)

DIN 4102 part 12 [E30-E90]  
NBN 713.020 (Rf1, Rf1½)

## German Regulation on Fire Security of Conduit Installations – Directive on fire protection requirements for cabling systems (MLAR)

### 5.1 Basic requirements

- 5.1.1** In compliance with the stipulated building laws and construction standards, electrical cable systems used in safety systems and safety equipment must contain intrinsic protection or be protected by additional components in such a manner as to ensure that the safety systems and safety equipment remain operational for a sufficiently long period of time (functional integrity = system circuit integrity) in cases of fire. Functional integrity must also be given under the effects of interaction with additional systems, equipment or their components.
- 5.1.2** Any additional safety systems and safety equipment which are required may be connected to electrical terminals used in safety systems and safety equipment operated in compliance with the stipulated building laws and construction standards. Here, it must be ensured that the safety systems and safety equipment prescribed by law are not compromised.

### 5.2 Functional integrity

#### 5.2.1 The functional integrity of a cable is ensured if

- a) the test requirements of DIN 4102-12:1998-11 (functional integrity classes E30 to E90) are fulfilled or
- b) the cables are installed on floor slabs below a floor screed with a thickness of at least 30 mm or
- c) the cables are installed in the earth

#### 5.2.2 Distribution boards for electrical cable systems with functional integrity according to paragraph 5.3 have to

- a) be installed in separate rooms which are not used for other purposes and are separated from other rooms by walls, ceilings and doors with fire resistance that corresponds to the necessary functional integrity duration and made of – except the doors – non-combustible materials
- b) be separated by housings which can guarantee the operation of the electrical equipment installed inside for the necessary functional integrity duration in case of fire by a certificate of usability from building authorities
- c) be encased by components (including their terminations) which provide a fire resistance that corresponds to the necessary functional integrity duration and are made (except the terminations) of non-combustible materials. The operation of the electrical equipment installed inside must be ensured for the functional integrity duration in case of fire.

### 5.3 Duration of functional integrity

#### 5.3.1 The functional integrity of a cable system must be ensured for at least 90 minutes for any of the following:

- a) Water boosting equipment for firefighting water
- b) Mechanical smoke exhaust systems and smoke control pressure systems for required stairwells in high-rise structures as well as for special structures where these systems are required. An exception here can be made for cable systems installed in stairwells, which require a functional integrity duration of 30 minutes.
- c) Mechanical hospital beds and other equipment with special functionality and fire brigade elevators. The only exceptions are cable systems used in travel shafts or powerplant rooms.

#### 5.3.2 The functional integrity of a cable system must be ensured for at least 30 minutes for any of the following:

- a) Safety lighting systems; excepted are cable systems that provide power to safety lighting within a fire compartment on a floor or within a stairwell; the maximum floor space per fire compartment is 1,600 m<sup>2</sup>.
- b) Passenger elevators with fire control systems; excepted are cable systems located within travel shafts or powerplant rooms.
- c) Fire detector systems including associated transmission systems; excepted are cable systems in rooms monitored by automatic fire detectors as well as cable systems in rooms without automatic fire detectors, where short or open circuits in the cable system caused by fires in these rooms will not compromise any of the fire detectors connected to this cable system.
- d) Alarm and emergency information systems for working personnel and visitors inasmuch as these systems must remain operational in cases of fire; excepted are cable systems that provide power to safety lighting within a fire compartment on a floor or within a stairwell; the maximum floor space per fire compartment is 1600 m<sup>2</sup>.
- e) Natural smoke exhaust systems (smoke discharge via thermal lift); excepted are systems that automatically open when power is interrupted or lost as well as cable systems in rooms monitored by automatic fire detectors where the response of a fire detector causes the system to open automatically.
- f) Mechanical smoke exhaust systems and smoke control pressure systems in applications differing from section 5.3.1.

# CALCULATING THE REQUIRED CROSS-SECTION

## Calculation of required cross-section for safety cables with E30 and E90 functional integrity

### 1. General

It is also important to keep in mind that exposure to flames will increase the resistance of a given cable. In Appendix A of test standard DIN 4102-12, this is described as follows:  
“In cases where no extra evidence is available, the conductor temperature in cable systems with integrated functional integrity can be approximated as the fire compartment temperature at the point in time at which functional integrity was lost.”  
This means that after 30 minutes, the conductor temperature is approx. 830 °C and after 90 minutes even higher than 1000 °C. However, measurements have proven that the values differ considerably.  
During two measurements, the increase in temperature was measured directly on the conductor in various cables using thermocouples. At the same time, the change in resistance ensuing from the temperature increase was measured in the conductor using a precision measuring bridge.  
50% of the length of the cable was located in the testing room and thus exposed directly to the effects of the temperature increase along the uniform temperature time curve. The other half of the cable was located outside of the test room at an ambient temperature of approximately 17 °C. After 30 minutes, the conductor temperature was measured to be only approx. 420 °C and after 90 minutes it was approx. 870 °C. On the basis of this data, tables have been created that allow electrical system planners and electricians to choose the actual cross-section that is required.  
This ensures that the necessary safety equipment remains functional for the required duration.  
It is even easier to calculate the required cross-section for fires using the line voltage drop calculation tool based on Excel spreadsheets. You can download this software from [www.cabling.datwyler.com](http://www.cabling.datwyler.com).

### 2. Table for calculating cross-section of cables

V	F (E30)	F (E90)	V	F (E30)	F (E90)
90:10	1.16	1.34	40:60	1.95	3.01
80:20	1.32	1.67	30:70	2.1	3.34
70:30	1.48	2.01	20:80	2.26	3.68
60:40	1.63	2.34	10:90	2.42	4.01
50:50	1.79	2.67	0:100	2.57	4.34

$\chi=58$  (electrical conductivity of copper at 20°C)

#### Explanation of table:

**V** is the ratio of “cold” to “hot” cable lengths, with the first number representing the portion of cable not immersed in flames. For this you choose the longest length of cable in a given fire compartment.  
Since the building is subdivided into multiple “fire compartments”, the cross-section of zero-halogen cable to be used depends on the ratio of “cold” to “hot” lengths, as shown in the table.

A fire compartment in this case is a room with a fire resistance duration of 30 or, accordingly, 90 minutes on all sides. An F90 fire compartment usually contains multiple F30 compartments. With longer lengths of cable, one should consider designs where the cable passes through multiple fire compartments. For example, it is preferable to install cable through neighbouring rooms than through a subterranean garage.

In the following example, we compare various aspects of the cross-section calculation:

A cable is to be installed with a length of 150 m and shall run through three equally large fire compartments, thus resulting in a ratio of “cold” to “hot” cable lengths of 60:40 (exactly 66:33).  
The reason for this is that a fire can only break out in **one** fire compartment and it is assumed that the fire will not spread to the other fire compartments.  
**F** is the required factor to be multiplied with the determined **theoretical** cross-section. After calculating the cross-section in this manner, choose the next higher available conductor cross-section.

# CALCULATING THE REQUIRED CROSS-SECTION

## 3. Procedure for calculating the cross-section

### Example for SHE motor:

$U = 400 \text{ V}$ ; cable length  $l = 150 \text{ m}$ ;  $P = 15 \text{ kW}$   
 $\Delta U = 12 \text{ V}$  (corresponds to 3% line voltage drop)  
 $\cos \varphi = 0.87$   
 $\chi = 58$  (electrical conductivity of copper at  $20^\circ\text{C}$ )  
 $\chi = 56$  (electrical conductivity of copper at  $30^\circ\text{C}$ )

### Normal operating conditions

When calculating the cross-section, first determine the cross-section relative to the nominal current of the fuse as shown in 3.1 and in 3.2 for the line voltage drop in accordance with DIN VDE 0100-520. Choose the highest cross-section of the two.

### 3.1 Calculating the cross-section in accordance with DIN VDE 0298-4

First determine the cross-section for normal operating conditions in accordance with DIN VDE 0298-4. "Normal" conditions are an ambient air temperature of  $30^\circ\text{C}$  and a maximum conductor temperature of  $90^\circ\text{C}$ .

Installation type "E" on perforated cable trays. Groups of 4 cables, "single layer" = reduction factor "0.79"

Since the load current is 25A, a fuse with IN 32A is normally used.

(Note: Pumps or fans should be fitted with suitably dimensioned fuses since long operating pauses or high degrees of contamination can result in increased load and starting currents. For this reason, VdS CEA Directive 4001 prescribes using the following fuses for sprinkler pumps: "9.8.2.1 The fuses in pump control cabinets must be surge-proof and designed to resist the current of a blocked motor for at least 75% of the time until the motor windings fail. They also have to be able to withstand normal current plus 100% for at least 5 h.")

#### Modification 2007-07:

This can be achieved in the following manner:

High performance fuses can be installed in pump control cabinets designed to withstand the starting current for at least 20 s. The nominal current of the protective equipment must be larger than the operating current of the circuit."

In the author's opinion, safety systems should not contain a motor overload switch or fault-current circuit breaker.

To allow for comparisons with "normal" cable systems, calculations are made for a fuse with  $I_N 32A$  as well as for the recommended fuse with  $I_N 50A$ .

According to DIN VDE 0298-4, the cross-section can be calculated as follows:

$$I_z = \frac{I_{N32A} \cdot 1,45}{0,79 \text{ (reduction factor)}} = 58,74 \text{ A} \quad I_z = \frac{I_{N50A} \cdot 1,45}{0,79 \text{ (reduction factor)}} = 91,78 \text{ A}$$

Chosen cross-section: 10 mm<sup>2</sup> or 16 mm<sup>2</sup>

According to DIN VDE 0298-4 Table 6, Installation Type "E", for three conductors subjected to electrical load

### 3.2 Determining cross-section from line voltage drop calculation in accordance with DIN VDE 0100-520

$$I_b = \frac{P}{\sqrt{3} \cdot U \cdot \cos \varphi} \quad A = \frac{\sqrt{3} \cdot l \cdot I \cdot \cos \varphi}{\chi \cdot \Delta U}$$

$I_b = 25A$ 
 $A_{\text{theoret.}} = 8.37 \text{ mm}^2$

This results in a theoretical cross-section of 8.37 mm<sup>2</sup>

The reduction factor resulting from grouping the cables and the given installation type is 0.79.

$$A = \frac{A_{\text{theoret.}} \cdot 8,37 \text{ mm}^2}{0,79 \text{ (reduction factor)}}$$

$A = 10.60 \text{ mm}^2$

An available conductor cross-section of  $A = 16 \text{ mm}^2$  can be used.

# CALCULATING THE REQUIRED CROSS-SECTION

## 3.3 Fire conditions / functional integrity class E90

For equipment manufacturers, DIN VDE prescribes a line voltage drop of up to 10%. The voltage drop for fire conditions can be set to a higher value. In cases of fire, it is only important that the connected electrical consumers still function. Doubling the voltage drop halves the cross-section! In many cases, it can be helpful to calculate using a higher voltage drop. Even with poor cable configurations, a voltage drop of 4.5% is often sufficient. At the same time, the voltage drop calculation is based on a conductivity value of  $\chi = 56$  at a temperature of 30 °C.

Reduction factors based on installation type, cable grouping or increased ambient temperatures are not determining factors under fire conditions.

**Therefore, for fire conditions do not simply multiply the theoretically calculated value for 3% with the factor given in table 2! Instead, recalculate the voltage drop while taking into consideration the parameters for the fire conditions**

If you use a larger line voltage drop (4.5%, for example) and allow for the conductivity of copper at 20°C ( $\chi = 58$ ), the calculation is as follows:

$$A_{\text{theoret.}} = \frac{\sqrt{3} \cdot I_b \cdot \cos \varphi}{\chi \cdot \Delta U}$$

$$A_{\text{theoret.}} = 5.39 \text{ mm}^2$$

**For 3 equally large fire compartments, the factor = 2.34. This corresponds to a ratio of 60:40.**

$$A_{\text{E90}} = 5.39 \text{ mm}^2 \cdot 2.34 = 12.62 \text{ mm}^2$$

An available conductor cross-section of  $A = 16 \text{ mm}^2$  could be used.

For normal operating conditions, it is thus apparent that the calculated cross-section is also sufficient for maintaining functionality integrity in cases of fire.

## 3.4 Examples for calculating cross-section using line voltage drop

Example:

Three-phase motor 15 kW,  $I_b = 25 \text{ A}$ ,  $\cos \varphi = 0.87$

$U = 400 \text{ V}$

$\Delta U = 12 \text{ V}$  (corresponds to 3% line voltage drop)

$\chi = 56$  (electrical conductivity of copper at 30 °C)

Groups of 4 cables on cable tray, "single layer" = reduction factor "0.79" acc. to DIN VDE 0298-4

$\Delta U = 18 \text{ V}$  (corresponds to 4.5% line voltage drop)

$\chi = 58$  (electrical conductivity of copper at 20 °C), basis for fire case

The reduction factor is not required for the fire case.

# CALCULATING THE REQUIRED CROSS-SECTION

Normal operating conditions (and an example with correct fuse dimensioning)

Cable length m	Theoretical cross-section (Uv=3%) mm <sup>2</sup>	Reduction factor 0.79	Available cross-section mm <sup>2</sup>	Acc. to DIN VDE 0298-4 Table 6, Installation Type „E“ (Basis 32A) mm <sup>2</sup>	Acc. to DIN VDE 0298-4 Table 6, Installation Type „E“ (Basis 50A) mm <sup>2</sup>	Selected cross-section mm <sup>2</sup>
150	8.37	10.6	16	10	16	16

safety cable, functional integrity E30, voltage drop 4.5% (3% for comparison)

Cable length m	Theoretical cross-section (Uv=4.5%) mm <sup>2</sup>	V 60:40 F=1.63 calculated mm <sup>2</sup>	Insert mm <sup>2</sup> (10mm <sup>2</sup> would be sufficient for 35A fuse)	Theoretical cross-section (Uv=3%) mm <sup>2</sup>	V 60:40 F=1,63 calculated mm <sup>2</sup>	Insert mm <sup>2</sup>
150	5.39	8.79	16	8.37	13.65	16

safety cable, functional integrity E90, voltage drop 4.5% (3% for comparison)

Cable length m	Theoretical cross-section (Uv=4.5%) mm <sup>2</sup>	V 60:40 F=2.34 calculated mm <sup>2</sup>	Insert mm <sup>2</sup>	Theoretical cross-section (Uv=3%) mm <sup>2</sup>	V 60:40 F=2,37 calculated mm <sup>2</sup>	Insert mm <sup>2</sup>
150	5.39	12.62	16	8.37	19.59	25

Note:

As apparent in the examples, the cross-section does not necessarily increase as a result of using functional integrity classes E30 or E90.

In all cases, it remains as E30 and E90 for a cross-section of 16 mm<sup>2</sup>.

## 3.5 Calculating cross-section for a fire compartment

### 3.5.1 Functionality integrity class E30

#### Step 1: Resistance change as a result of temperature increase in conductor

First, the required cross-section is calculated for "normal operation" as described in sections 3.1 and 3.2 (16 mm<sup>2</sup>).

**R<sub>W</sub>** Resistance following temperature increase in Ω/km

**R<sub>K</sub>** Resistance of conductor at 20 °C

**ΔT** Temperature change in K

α Temperature coefficient (0.00393 for copper)

The temperature change ΔT in the conductor is 400 K during the 30th minute.

$$R_W = R_K \cdot (1 + 0.00393 \cdot \Delta T)$$

Example:

U = 400 V; I = 150 m; P = 15 kW; ΔU = 18 V (corresponds to 4.5% voltage drop)

cos φ = 0.87

χ = 58 (electrical conductivity of copper)

I<sub>b</sub> = 25 A, A<sub>theoret.</sub> = 5.39 mm<sup>2</sup>

The resistance for 6 mm<sup>2</sup> is given in table 5.3.6 as 3.08 Ω/km

A cross-section must be found whose **R<sub>W</sub>** for 30 minutes is closest to **R<sub>K</sub>** from the previously calculated cross-section.

The E30 factor is 2.57.

$$R_W = \frac{3,08 \text{ } \Omega / \text{km}}{1 + 0,00393 \cdot 400} = \frac{3,08 \text{ } \Omega / \text{km}}{\text{Faktor}_{E30} 2,57} = 1,198 \Omega / \text{km}$$

# CALCULATING THE REQUIRED CROSS-SECTION

## Step 2: Calculating the conductor cross-section to use

A cross-section must be found in table 3.6 where  $R_W$  for 30 minutes is closest to  $R_K$  from the previously calculated cross-section.

Example for calculated cross-section of 6 mm<sup>2</sup>.

$$16 \text{ mm}^2 = 1.15 \text{ } \Omega/\text{km}$$

$$25 \text{ mm}^2 = 0.727 \text{ } \Omega/\text{km}$$

Since the theoretical cross-section was determined to be 5.39 mm<sup>2</sup> for cold conditions, a cross-section of **16 mm<sup>2</sup>** will be sufficient in our example.

## 3.5.2 Functionality integrity class E90

### Step 1: Resistance change as a result of temperature increase in conductor

$R_W$  Resistance following temperature increase in  $\Omega/\text{km}$

$R_K$  Resistance of conductor at 20 °C

$\Delta T$  Temperature change in K

$\alpha$  Temperature coefficient (0.00393 for copper)

The temperature change  $\Delta T$  in the conductor is **850 K** during the 90th minute.

$$R_W = R_K \cdot (1 + 0.00393 \cdot \Delta T)$$

Example:

$U = 400 \text{ V}$ ;  $l = 150 \text{ m}$ ;  $P = 15 \text{ kW}$ ;  $\Delta U = 18 \text{ V}$  (corresponds to 4.5% voltage drop)

$$\cos \varphi = 0.87$$

$\chi = 58$  (electrical conductivity of copper)

$$I_b = 25 \text{ A}, \quad A_{\text{theor.}} = 5.39 \text{ mm}^2$$

The resistance for **6 mm<sup>2</sup>** is given in table 3.6 as **3.08  $\Omega/\text{km}$**

A cross-section must be found whose  $R_W$  for 90 minutes is closest to  $R_K$  from the previously calculated cross-section.

$$R_W = \frac{3,08 \text{ } \Omega/\text{km}}{1 + 0,00393 \cdot 850} = \frac{3,08 \text{ } \Omega/\text{km}}{\text{Faktor}_{E90} 4,34} = 0,709 \text{ } \Omega/\text{km}$$

The **E90 factor** is **4.34**.

### Step 2: Calculating the conductor cross-section to use

A cross-section must be found in table 3.6 where  $R_W$  for 90 minutes is closest to  $R_K$  from the previously calculated cross-section.

Example for calculated cross-section of 6 mm<sup>2</sup>.

$$25 \text{ mm}^2 = 0.727 \text{ } \Omega/\text{km}$$

$$35 \text{ mm}^2 = 0.524 \text{ } \Omega/\text{km}$$

Since the theoretical cross-section was determined to be 5.39 mm<sup>2</sup> for cold conditions, a cross-section of **25 mm<sup>2</sup>** will be sufficient in our example.

In this (rather extreme) example, the required cross-section increases by an entire dimension. By cleverly planning the cable routes to pass through multiple fire compartments or possibly with a larger line voltage drop, it is possible to reduce the required cross-section.

# CALCULATING THE REQUIRED CROSS-SECTION

## 3.6 Conductor resistances for safety cables

Single-core cable in accordance with VDE 0295	
Conductor cross-section mm <sup>2</sup>	Max. resistance for 20 °C in Ω/km
1.5	12.1
2.5	7.41
4	4.61
6	3.08
10	1.83

Multicore cable in accordance with VDE 0295			
Conductor cross-section mm <sup>2</sup>	Max. resistance for 20 °C in Ω/km	Conductor cross-section mm <sup>2</sup>	Max. resistance for 20 °C in Ω/km
16	1.5	120	0.53
25	0.727	150	0.124
35	0.524	185	0.0991
50	0.387	240	0.0754
70	0.268	300	0.0601
95	0.193		

Installation in E / I 90 channel

### Example:

U = 400 V; cable length l = 150 m; P = 15 kW

ΔU = 12 V (corresponds to 3% line voltage drop)

cos φ = 0.87

χ = 58 (electrical conductivity of copper at 20°C)

χ = 56 (electrical conductivity of copper at 30°C)

### Calculating the cross-section in accordance with DIN VDE 0298-4

First determine the cross-section for normal operating conditions in accordance with DIN VDE 0298-4. "Normal" conditions are an ambient air temperature of 30 °C and a maximum conductor temperature of 70°C for PVC cables. Installation type "A2" on perforated cable trays. Groups of 4 three-phase current cables in installation duct = reduction factor "0.65"

Since the load current is 25A, a fuse with I<sub>N</sub> 32A is normally used.

(Note: Pumps or fans should be fitted with suitably dimensioned fuses since long operating pauses or high degrees of contamination can result in increased load and starting currents. For this reason, VdS CEA Directive 4001 prescribes using the following fuses for sprinkler pumps: "9.8.2.1 The fuses in pump control cabinets must be surge-proof and designed to resist the current of a blocked motor for at least 75% of the time until the motor windings fail. They also have to be able to withstand normal current plus 100% for at least 5 h.")

#### Modification 2007-07:

This can be achieved in the following manner:

High performance fuses can be installed in pump control cabinets designed to withstand the starting current for at least 20 s. The nominal current of the protective equipment must be larger than the operating current of the circuit."

In the author's opinion, safety systems should not contain a motor overload switch or fault-current circuit breaker.

To allow for comparisons with "normal" cable systems, calculations are made for a fuse with I<sub>N</sub> 32A as well as for the recommended fuse with I<sub>N</sub> 50A.

According to DIN VDE 0298-4, the cross-section can be calculated as follows:

$$I_z = \frac{I_{N32A} \times 1,45}{0,65 \text{ (reduction factor)}} = 71,4A$$

$$I_z = \frac{I_{N50A} \times 1,45}{0,65 \text{ (reduction factor)}} = 111,54A$$

Chosen cross-section 35 mm<sup>2</sup> or 70 mm<sup>2</sup>

According to DIN VDE 0298-4 Table 6, Installation Type "E", for three conductors subjected to electrical load

The line voltage drop no longer needs to be calculated for an ambient temperature of 150 °C.

# CALCULATING THE REQUIRED CROSS-SECTION

The easiest way to perform this calculation is using our software!

## Determination of the cross section of Datwyler KERAM cables for system circuit integrity E30 and E90



Type of current: Three-phase current Language: English

$$I_b = \frac{P}{\sqrt{3} \cdot U \cdot \cos \varphi} \quad A_{E30/E90} = \frac{\sqrt{3} \cdot I_b \cdot \cos \varphi}{x \cdot \Delta U}$$
a factor resulting from ratio between the "cold" and "hot" length

Voltage U 400 V	Total length of cable 100 m	
$\Delta U$ in case of fire 18 V 4,5 %	Maximum cable length in the compartment 50 m	Effective power factor cos $\varphi$ 0,85

Company: \_\_\_\_\_  
Agent: \_\_\_\_\_  
Project: \_\_\_\_\_  
[Back to "General"](#)

Simultaneity factor 1	Conductivity $\gamma$ at 20°C 58	Power P or Load current I <sub>b</sub> 30 KW A	Cable n° 1
--------------------------	-------------------------------------	--	---------------

Cross section A 4,5%  $\times$  Factor E30 / E90

7,18 mm <sup>2</sup>	1,79	Minimum cross section	12,82 mm <sup>2</sup>	for E30
	2,27		16,27 mm <sup>2</sup>	for E60
	2,67		19,18 mm <sup>2</sup>	for E90

**General information**

Load current I <sub>b</sub>	Minimum cross section A (30°C) and $\Delta U$ at 1%	V hot to cold zone	Factor for E30	Factor for E60	Factor for E90
50,94 A	11,16 mm <sup>2</sup> for "normal" cables	50 50	1,79	2,27	2,67

Reduction factors for installation methods according to DIN VDE 0298-4 or NIN 2010 5.2 (or comparable standards) must also be considered  
Warning: Only voltage drop calculation. According to DIN VDE 0298-4 or NIN 2010 5.2 or comparable standards, higher cross sections may be required

[More information](#)

Note VDS Directive for sprinkler systems

Datwyler Cabling Solutions AG Gotthardstrasse 31 6460 Altdorf / CH T +41 41 875-1268 F +41 41 875-1986 [info.cabling.ch@datwyler.com](mailto:info.cabling.ch@datwyler.com)  
Datwyler Cables GmbH Auf der Roos 4-12 65795 Hattersheim / D T +49 6190 88 80 0 F +49 6190 88 80 80 [info.cabling.de@datwyler.com](mailto:info.cabling.de@datwyler.com)

Core colour-coding in accordance with CENELEC and SEV standards.

Core colour-coding in accordance with DIN VDE 0293 - 308 : 01/2003 (CENELEC HD 308 10/2001)

No. of cores	1(-0)		1(-J)	2(-0)	2(-J)	3(-0)	3(-J)	4(-0)	4(-J)	5(-0)	5(-J)
Conductor function	L	N	PE	LN	LPE	3L	LNPE	3LN	3LPE	4LN	3LNPE
Brown (L)											
Blue (N)											
Black (L)											
Grey (L)											
Yellow-green (PE)											

L = external conductor

N = neutral conductor

PE = protective conductor

Core markings for cables ≥ 6 conductors

External conductor = black with white printed digits

Protective conductor = yellow-green

Conductors marked in accordance with VDE 0815 for industrial electronics cable JE-H(ST)H...Bd  
(2 twin-wires: star quad; otherwise: 4 pairs in bundles)

Pair	Conductor a	Conductor b
1		
2		
3		
4		

Each bundle is assigned to a ring group. All conductors in a bundle are marked with coloured rings and the order of the specific coloured rings in groups, or they are marked by a printed bundle number. When counting the groups, start with the innermost one.



Bundle markings

Bundle number		1	2	3	4	5	6	7	8	9	10	11	12	13	14	15	16	17	18	19	20
Ring colour																					
Ring group for bundle	4 conductors	I	I	II	II																
	8 conductors or 4 pairs	I	II	III	IV	I	II	III	IV	I	II	III	IV	I	II	III	IV	I	II	III	IV
Tape coil																					

# FUNCTIONAL INTEGRITY

## Vertical installation

In order to install cable systems vertically while maintaining functional integrity (system circuit integrity), DIN 4102-12 prescribes the following measures:

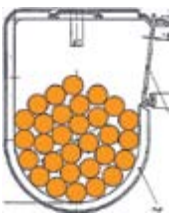
The placement and classification of functionally integral cables installed separately beneath a ceiling applies to both horizontal and vertical cable lines along walls and ceilings. When cables are installed horizontally on a wall using profile rails and clamps, the clamps used for separately installed cables must be fastened in such a manner that a slippage of clamps will be prevented.

If the cable installation is entirely vertical (rising lines or separately installed cables, for example), you must install effective support mounts (spacing A <sup>3</sup> 3500 mm), for example, a Datwyler WUM.

For vertical cable systems, the same placement and classification applies as with separately installed cables along a ceiling using single clamps. A certified bracket clamp can be used as alternative means of fastening the cables. The spacing of the bracket clamp is the same as the spacing used to install cables separately using single clamps.

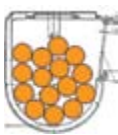
## Multi-cable supports

**Other comparable systems offer only a fraction of the capacity of a Hermann clamp!**



30 pcs. Datwyler Keramik (N)HXH FE180/E30-E60  
3x1.5 mm² cable in a Hermann clamp

15 pcs. Datwyler Keramik (N)HXH FE180/  
E30-E60 3x1.5 mm² cable  
in a Hermann clamp "S"



### Furthermore:

**When installing a Hermann clamp in acc. with MLAR for "cables without functional integrity" above a fireproof ceiling, it is possible to install a linear cable weight of 15 kg/m with a clamp spacing of 600 mm.**

## E0 multi-cable support

**For wall and ceiling installations in accordance with MLAR 11/2005**



Article No.	Name	Interior dimensions mm x mm x mm	Exterior dimensions mm x mm x mm	Units / pcs.
3800086	E0 multi-cable supports	approx. 80 x 45 x 33	approx. 87 x 60 x 33	25
3800087	E0 S multi-cable supports	approx. 55 x 35 x 33	approx. 63 x 45 x 33	50
To speed up installation times for the E0 multi-cable support, we recommend using the Datwyler SWM-SM 50 setting tool.				

### System description:

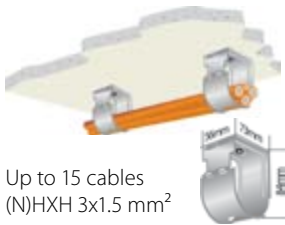
For fire-safe installation of multiple cables or lines along ceilings or walls above fireproof ceilings in accordance with MLAR 11/2005 (not for functional integrity!).

### Excerpt from MLAR 11/2005 3.5.3.:

The special requirements pertaining to fireproof fasteners for lines installed in the area between floor slabs and suspended ceilings must be observed.

Installation spacing (cm)	30	40	50	60	70	80
Cable weight (kg/m)	6	4.5	3.6	3	2.6	2.3

## Multi-cable support, type E30-E90 for Hermann clamp S for horizontal wall and ceiling installations



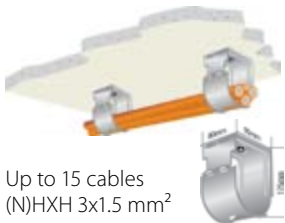
Up to 15 cables  
(N)HXH 3x1.5 mm<sup>2</sup>

The cable with the highest weight must be placed in the multi-cable support beneath the cables with a lower weight.

Datwyler Keram	Spacing (mm)	Functional integrity	Note
<b>FE180 / E30-E60</b>			maximum load: 3 kg/m
(N)HXH	800	E30-E60	
(N)HXCH	800	E30-E60	
<b>FE180 / E90</b>			maximum load: 3 kg/m
(N)HXH	800	E90	
(N)HXCH	800	E90	
<b>FE180 / E30-E90</b>			maximum load: 3 kg/m
JE-H(ST)H...Bd	800	E30-E60	*
JE-H(ST)H...Bd	600	E30-E90	
JE-H(ST)HRH...Bd	800	E30-E60	
JE-H(ST)HRH...Bd	600	E30-E90	

\* JE-H(ST)H...Bd FE180/E30L classified in same manner as with E30.

## Multi-cable support, type E30-E90 for Hermann clamp (large) for horizontal wall and ceiling lines



Up to 15 cables  
(N)HXH 3x1.5 mm<sup>2</sup>

The cable with the highest weight must be placed in the multi-cable support beneath the cables with a lower weight.

Datwyler Keram	Spacing (mm)	Functional integrity	Note
<b>FE180 / E30-E60</b>			maximum load: 6 kg/m
(N)HXH	800	E30-E60	
(N)HXCH	800	E30-E60	
<b>FE180 / E90</b>			maximum load: 6 kg/m
(N)HXH	800	E90	
(N)HXCH	800	E90	
<b>FE180 / E30-E90</b>			maximum load: 6 kg/m
JE-H(ST)H...Bd	800	E30-E60	*
JE-H(ST)H...Bd	600	E30-E90	
JE-H(ST)HRH...Bd	800	E30-E60	
JE-H(ST)HRH...Bd	600	E30-E90	

\* JE-H(ST)H...Bd FE180/E30L classified in same manner as with E30.

# SINGLE CLAMP

## Separate and bundle installation using type SAS or TSD single clamps (stainless steel tunnel clamp) for horizontal wall and ceiling lines



Datwyler Keram	Spacing (mm)	Functional integrity	Note
<b>FE180 / E30-E60</b>			bundles without limits (number / weight)
(N)HXH	600	E30-E60	
	1200	E30	
(N)HXCH	600	E30-E60	
	1200	E30	
<b>FE180 / E90</b>			bundles without limits (number / weight)
(N)HXH	600	E90	
(N)HXCH	600	E90	
<b>FE180 / E30-E90</b>			maximum load: 2.5 kg/m
JE-H(ST)H...Bd	600	E90	
	1200	E30-E60	*
JE-H(ST)HRH...Bd	600	E90	
	1200	E30-E60	

\* JE-H(ST)H...Bd FE180/E30L classified in same manner as with E30.

## Separate and bundle installation using type SAS or TSD single clamps (stainless steel tunnel clamp) for vertical installation



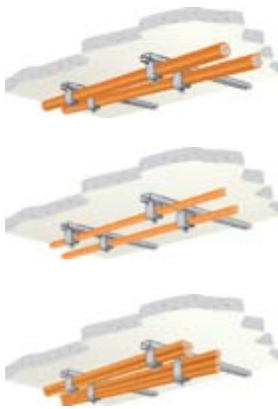
Datwyler Keram	Spacing (mm)	Functional integrity	Note
<b>FE180 / E30-E60</b>			bundles without limits (number / weight)
(N)HXH	600	E30-E60	
	1200	E30	
(N)HXCH	600	E30-E60	
	1200	E30	
<b>FE180 / E90</b>			bundles without limits (number / weight)
(N)HXH	600	E90	
(N)HXCH	600	E90	
<b>FE180 / E30-E90</b>			maximum load: 2.5 kg/m
JE-H(ST)H...Bd	600	E90	
	1200	E30-E60	*
JE-H(ST)HRH...Bd	600	E90	
	1200	E30-E60	

\* JE-H(ST)H...Bd FE180/E30L classified in same manner as with E30.

Note: For vertical installations >3.5 m between fire bulkheads on floor slabs, the cable system must be installed using an effective support measure (Datwyler WUM, for example).

Please follow the installation manual on page 79.

## Separate and bundle installation using type B...D strap clamps without troughs for horizontal wall and ceiling installation



Strap clamps with troughs can also be used.

Datwyler Keram	Spacing (mm)	Functional integrity	Note
<b>FE180 / E30-E60</b>			bundles without limits (number / weight)
(N)HXH	800	E30-E60	
	1200	E30	
(N)HXCH	800	E30-E60	
	1200	E30	
<b>FE180 / E90</b>			bundles without limits (number / weight)
(N)HXH	800	E90	
(N)HXCH	800	E90	
<b>FE180 / E30-E90</b>			maximum load: 2.5 kg/m
JE-H(ST)H...Bd	800	E90	
	1200	E30-E60	*
JE-H(ST)HRH...Bd	800	E90	
	1200	E30-E60	
<b>FO Universal Safety Cables</b>			according to DIN 4102-12
ZGGFR	600	30 min.	2-12 fibres
wbGGFR	600	30 min.	24-60 fibres

\* JE-H(ST)H...Bd FE180/E30L classified in same manner as with E30.

## Separate and bundle installation using type B...D strap clamps without troughs for vertical installation



Datwyler Keram	Spacing (mm)	Functional integrity	Note
<b>FE180 / E30-E60</b>			bundles without limits (number / weight)
(N)HXH	800	E30-E60	
	1200	E30	
(N)HXCH	800	E30-E60	
	1200	E30	
<b>FE180 / E90</b>			bundles without limits (number / weight)
(N)HXH	800	E90	
(N)HXCH	800	E90	
<b>FE180 / E30-E90</b>			maximum load: 2.5 kg/m
JE-H(ST)H...Bd	800	E90	
	1200	E30-E60	*
JE-H(ST)HRH...Bd	800	E90	
	1200	E30-E60	

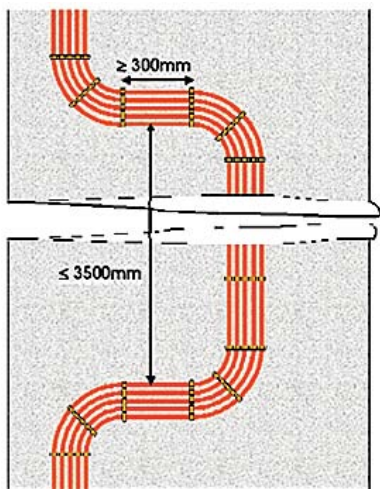
\* JE-H(ST)H...Bd FE180/E30L classified in same manner as with E30.

Note: For vertical installations >3.5 m between fire bulkheads on floor slabs, the cable system must be installed using an effective support measure (Datwyler WUM, for example).

# WUM

## WUM

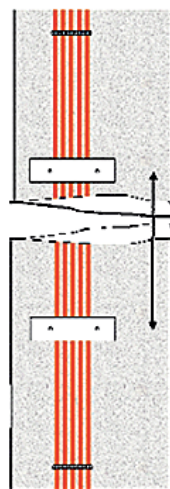
Effective support measure in accordance with DIN 4102-12



"With riser lines, this classification only applies when effective support mounts (spacing  $\leq 3,500\text{ mm}$ ) are installed for the cables."



Datwyler WUM



## In-wall installation horizontally / vertically along wall or ceiling



(Mineral-based wall covering on cable  $\geq 15$  mm)

Datwyler Keram	Spacing (mm)	Functional integrity	Note
-------------------	-----------------	-------------------------	------

### FE180 / E30-E60

(N)HXH		E30	
(N)HXCH		E30	

### FE180 / E90

(N)HXH		E90	
(N)HXCH		E90	

### FE180 / E30-E90

JE-H(ST)H...Bd		E30-E90	*
JE-H(ST)HRH...Bd		E30-E90	

\* JE-H(ST)H...Bd FE180/E30L classified in same manner as with E30.

## STEEL-ARMoured CONDUITS

### Separate and bundle installation in type Stapa DN to M steel armoured conduit without troughs with type SAS / TSD single clamps or type B...D strap clamps for horizontal wall and ceiling installations



( $\leq$  M63, filling factor  $\leq 60$  %)

Datwyler Keram	Spacing (mm)	Functional integrity	Note
-------------------	-----------------	-------------------------	------

### FE180 / E30-E60

(N)HXH	1200	E30	bundles without limits (number / weight)
(N)HXCH	1200	E30	

### FE180 / E30-E90

JE-H(ST)H...Bd	1200	E30-E60	maximum load: 2.5 kg/m
JE-H(ST)HRH...Bd	1200	E30-E60	

\* JE-H(ST)H...Bd FE180/E30L classified in same manner as with E30.

Maximum line length without fasteners  
between ends of conduit:  $\leq 1.200$  mm

In accordance with DIN 4102-12, a "slip-off protection" is necessary for  
horizontal wall installations using strap clamps.

# PROTECTIVE CONDUITS

## Separate and bundle installation in zero-halogen protective conduit with type SAS / TSD single clamps for horizontal wall and ceiling installation



Datwyler Keram	Spacing (mm)	Functional integrity	Note
<b>FE180 / E30-E60</b>			bundles without limits (number / weight)
(N)HXH	600	E30-E60 <sup>1)</sup>	
	1200	E30 <sup>1)</sup>	
(N)HXCH	600	E30-E60 <sup>1)</sup>	
	1200	E30 <sup>1)</sup>	
<b>FE180 / E90</b>			bundles without limits (number / weight)
(N)HXH	600	E90	
(N)HXCH	600	E90	
<b>FE180 / E30-E90</b>			maximum load: 2.5 kg/m
JE-H(ST)H...Bd	600	E90 <sup>1)</sup>	
	1200	E30-E60 <sup>1)</sup>	*
JE-H(ST)HRH...Bd	600	E90 <sup>1)</sup>	
	1200	E30-E60 <sup>1)</sup>	

<sup>1)</sup> also in aluminium protective conduit

\* JE-H(ST)H...Bd FE180/E30L classified in same manner as with E30.

## Separate and bundle installation in zero-halogen protective conduit with strap clamps for horizontal wall and ceiling installations



Datwyler Keram	Spacing (mm)	Functional integrity	Note
<b>FE180 / E30-E60</b>			bundles without limits (number / weight)
(N)HXH	800	E30-E60 <sup>1)</sup>	
	1200	E30 <sup>1)</sup>	
(N)HXCH	800	E30-E60 <sup>1)</sup>	
	1200	E30 <sup>1)</sup>	
<b>FE180 / E90</b>			bundles without limits (number / weight)
(N)HXH	800	E90	
(N)HXCH	800	E90	
<b>FE180 / E30-E90</b>			maximum load: 2.5 kg/m
JE-H(ST)H...Bd	800	E90 <sup>1)</sup>	
	1200	E30-E60 <sup>1)</sup>	*
JE-H(ST)HRH...Bd	800	E90 <sup>1)</sup>	
	1200	E30-E60 <sup>1)</sup>	

Strap clamps with troughs can also be used.

<sup>1)</sup> also in aluminium protective conduit

\* JE-H(ST)H...Bd FE180/E30L classified in same manner as with E30.

In accordance with DIN 4102-12, a "slip-off protection" is necessary for horizontal wall installation using strap clamps.

# PROTECTIVE / WIRE MESH CABLE DUCTS

Bundle installation in protective cable duct (LLK 60.100 + holding piece LHS 100)  
for horizontal wall and ceiling lines



Datwyler Keram	Spacing (mm)	Functional integrity	Note
<b>FE180 / E30-E60</b>			maximum load: 3.1 kg/m ceiling installation; 7.0 kg/m wall installation
(N)HXH	500	E30	from 1.5 mm <sup>2</sup> to 16 mm <sup>2</sup>
<b>FE180 / E30-E90</b>			maximum load: 3.1 kg/m ceiling installation; 7.0 kg/m wall installation
JE-H(ST)H...Bd	500	E30	*
JE-H(ST)HRH...Bd	500	E30	

Bundle installation in protective cable duct (LLK 26.030)  
for horizontal wall and ceiling lines



Datwyler Keram	Spacing (mm)	Functional integrity	Note
<b>FE180 / E30-E90</b>			maximum load: 0,3 kg/m
JE-H(ST)H...Bd	500	E30	*
JE-H(ST)HRH...Bd	500	E30-E60	

Bundle installation in wire mesh cable duct  
Lanz Oensingen AG (CH), G-duct with G-post or hooked rail  
for horizontal wall and ceiling lines



Datwyler Keram	Spacing (mm)	Functional integrity	Note
<b>FE180 / E30-E60</b>			G-... ≤ 50x75 mm ≤ 3 kg/m
(N)HXH	1250	E30	from 1.5 mm <sup>2</sup> to 16 mm <sup>2</sup>
(N)HXCH	1250	E30	from 1.5 mm <sup>2</sup> to 16 mm <sup>2</sup>
<b>FE180 / E30-E90</b>			G-... ≤ 50x75 mm ≤ 3 kg/m
JE-H(ST)H...Bd	1250	E30	*
JE-H(ST)HRH...Bd	1250	E30-E60	
<b>FE180 / E30-E60</b>			G-... ≤ 75x100 mm ≤ 7,5 kg/m
(N)HXH	1250	E30	no restrictions
(N)HXCH	1250	E30	no restrictions
<b>FE180 / E30-E90</b>			G-... ≤ 75x100 mm ≤ 7,5 kg/m
JE-H(ST)H...Bd	1250	E30	*
JE-H(ST)HRH...Bd	1250	E30-E60	

\* JE-H(ST)H...Bd FE180/E30L classified in same manner as with E30.

# UNLIMITED FUNCTIONAL INTEGRITY

## Standard installation techniques are not practical and are more expensive

Datwyler “Keram” safety cables for high- and low-voltage applications with integrated functional integrity in accordance with DIN 4102-12 allow for installation techniques that fulfil nearly all requirements in contemporary building applications. They are also highly affordable.

Cables with integrated functional integrity are used in applications requiring special protection against fire and hazards to persons and property, and where building safety laws and provisions must be complied with.

The highly limited standard installation techniques are not able to comply with the demands in construction work and architecture. As a result, costly and time-intensive building site approvals are required on a case-by-case basis together with even more expensive correctional measures.

The installation itself is costly in terms of materials and time when performed in the “normal” manner.

Datwyler “Keram” cable types for high- and low-voltage applications with functional integrity in accordance with DIN 4102-12 allow for installation techniques that fulfil nearly all requirements in contemporary building applications. They are also highly affordable.

Installation type	Standard installation techniques in accordance with DIN 4102-12 (Nov. 1998)	Installation techniques with Datwyler Keram cable in acc. with DIN 4102-12	Savings fastening system
<b>Cable ladder</b>	With threaded rod suspension Support spacing: up to 1.200 mm Width: up to 400 mm Load capacity: up to 20 kg/m	Without threaded rod suspension Support spacing: up to 1.500 mm Width: up to 400 mm Load capacity: up to 20 kg/m	Approx. 20%
<b>Cable tray</b>	With threaded rod suspension Support spacing: up to 1.200 mm Width: up to 300 mm Load capacity: up to 10 kg/m	Without threaded rod suspension Support spacing: up to 1.500 mm Width: up to 400 mm Load capacity: up to 20 kg/m	More than 50% for cable loads larger than 10 kg/m
<b>Strap clamp</b>	With trough Fastener spacing up to 600 mm	Without trough Fastener spacing up to 1.2 m (E30); 800 mm (E60 + E90) Bundling up to 2.5 kg/m	Approx. 60% for separately installed cables, more than 90 % for cable bundles
<b>Single clamp</b>	Line spacing: up to 300 mm	Fastener spacing up to 1.2 m (E30); 600 mm (E60 + E90) Bundling up to 2.5 kg/m	Approx. 50 - 60 % for separately installed cables, more than 90 % for cable bundles
<b>Multi-cable supports</b>	(Bundled lines only on cable tray / cable ladder)	Bundle lines in multi-cable support Fastener spacing up to 800 mm (E30); 600 mm (E60 + E90) Up to 3 or 6 kg/m cable weight.	More than 90%
<b>Conduit / duct</b>	Not possible	Installation in zero-halogen plastic conduit / aluminium protective conduit / steel-armoured conduit / sheet steel ducts	

## Wire mesh trays for horizontal wall and ceiling installation



Ceiling with threaded rod

Wall with threaded rod

Width ≤ mm	Load capacity ≤ kg/m	Fastener spacing ≤ m	OBO Menden				PUK Berlin				Vergokan B- Oudenaarde			
			(N)HXH E30 (N)HXH E90	(N)HXCH E30 (N)HXCH E90	JE-H(S)H	JE-H(S)HRH	(N)HXH E30 (N)HXH E90	(N)HXCH E30 (N)HXCH E90	JE-H(S)H	JE-H(S)HRH	(N)HXH E30 (N)HXH E90	(N)HXCH E30 (N)HXCH E90	JE-H(S)H	JE-H(S)HRH
			Datwyler Keramik				Datwyler Keramik				Datwyler Keramik			
400	20	1,5					E30 E90	E30 E90			E30 E90	E30 E90	E30 E60	E30 E60
400	10	1,25					E30 E90	E30 E90			E30 E90	E30 E90	E30 E60	E30 E60
300	10	1,2					E30 E90	E30 E90			E30 E90	E30 E90	E30 E60	E30 E60
300	30	1,5 stainless steel	E30 E90	E30 E90	E30	E30								
400	20	1,5					E30 E90	E30 E90			E30 E90	E30 E90	E30 E60	E30 E60
400	10	1,25					E30 E90	E30 E90			E30 E90	E30 E90	E30 E60	E30 E60
300	10	1,2					E30 E90	E30 E90			E30 E90	E30 E90	E30 E60	E30 E60



Ceiling with threaded rod



Wall with threaded rod

Metal Deploye S.A (Cablofil)							Niedax Linz/Rhein	
Width ≤ mm	Load capacity ≤ kg/m	Fastener spacing ≤ m	(N)HXH E30 (N)HXH E90	(N)HXCH E30 (N)HXCH E90	JE-H(S)H	JE-H(S)HRH	FQ Universal Safety ZGGFR 2-12 Fasern wbGGFR 24-60 Fasern	
			Datwyler Keramik				Datwyler	
400	20	1,5						
400	10	1,25	E30 E90	E30 E90	E30	E30		
300	10	1,2					30 min.	
300	30	1,5 stainless steel						
400	20	1,5						
400	10	1,25	E30 E90	E30 E90	E30	E30		
300	10	1,2	E30 E90	E30 E90	E30	E30	30 min.	

E&OE.  
Please see the cable tray vendor's General Appraisal Certificates (ABP) and approvals for assessing standard-compliant cable trays (in accordance with DIN 4102-12).

# CABLE TRAYS

## Cable trays for horizontal ceiling installation

	Width ≤ mm	Load capacity ≤ kg/m	Fastener spacing ≤ m	PUK Berlin				Vergokan B- Oudenaarde				
				(N)HXH E30-E60 (N)HXH E90	(N)HXCH E30-E60 (N)HXCH E90	JE-H(ST)H E30-E90 *	JE-H(ST)HRH E30-E90*	(N)HXH E30-E60 (N)HXH E90	(N)HXCH E30-E60 (N)HXCH E90	JE-H(ST)H E30-E90 *	JE-H(ST)HRH E30-E90*	
				Datwyler Keramik				Datwyler Keramik				
Ceilings without threaded rod	400	30	1,50									
	400	20	1,50	E30 E90	E30 E90	E30 E90	E30 E60	E30 E90	E30 E90	E30	E30	
	300	20	1,50	E30 E90	E30 E90	E30 E90	E30 E60	E30 E90	E30 E90	E30	E30	
				Datwyler Keramik				Datwyler Keramik				
	400	30	1,50									
	400	20	1,50	E30 E90	E30 E90	E30 E90	E30 E60	E30 E90	E30 E90	E30	E30	
Wall without threaded rod	300	20	1,50	E30 E90	E30 E90	E30 E90	E30 E60	E30 E90	E30 E90	E30	E30	
					Datwyler Keramik				Datwyler Keramik			
Standard in acc. with DIN 4102-12	300	10	1,20	E30 E90	E30 E90	E30 E90	E30 E90	E30 E90	E30 E90	E30 E90	E30 E90	

E&OE.  
Please see the cable tray vendor's General Appraisal Certificates (ABP) and approvals for assessing standard-compliant cable trays (in accordance with DIN 4102-12).

\*) More Appraisal Certificates coming soon.

Special fastening with clamps is permitted with standard-compliant cable trays if there is just a non-significant deviation from the General Appraisal Certificate (ABP).

Niedax Linz/Rhein						Rico Kirchheim/Teck				OBO - Menden			
(N)HXH E30-E60 (N)HXH E90	(N)HXCH E30-E60 (N)HXCH E90	JE-H(ST)H E30-E90 *	JE-H(ST)HRH E30-E90*	FO Universal Safety ZGGFR 2-12 Fasern wbGGFR 24-60 Fasern	(N)HXH E30-E60 (N)HXH E90	(N)HXCH E30-E60 (N)HXCH E90	JE-H(ST)H E30-E90 *	JE-H(ST)HRH E30-E90*	(N)HXH E30-E60 (N)HXH E90	(N)HXCH E30-E60 (N)HXCH E90	JE-H(ST)H E30-E90 *	JE-H(ST)HRH E30-E90 *	
Datwyler Keramik						Datwyler Keramik				Datwyler Keramik			
E30 E90	E30 E90	E30	E30		E30 E90	E30 E90	E30	E30					
E30 E90	E30 E90	E30 E60	E30 E60		E30 E90	E30 E90	E30 E60	E30 E60	E30 E90	E30 E90	E30	E30	
E30 E90	E30 E90	E30	E30 E60		E30 E90	E30 E90	E30	E30 E60	E30 E90	E30 E90	E30	E30	
Datwyler Keramik						Datwyler Keramik				Datwyler Keramik			
E30 E90	E30 E90	E30	E30		E30 E90	E30 E90	E30	E30					
E30 E90	E30 E90	E30 E60	E30		E30 E90	E30 E90	E30 E60	E30	E30 E90	E30 E90	E30	E30	
E30 E90	E30 E90	E30 E60	E30		E30 E90	E30 E90	E30 E60	E30	E30 E90	E30 E90	E30	E30	
Datwyler Keramik						Datwyler Keramik				Datwyler Keramik			
E30 E90	E30 E90	E30 E90	E30 E90	30 Min.	E30 E90	E30 E90	E30 E90	E30 E90	E30 E90	E30 E90	E30 E90	E30 E90	

# LOW-VOLTAGE CABLE E30-E60

Datwyler (N)HXH FE180 / E30-E60 Keram  
all dimensions



## Installation spacing

Datwyler fastener	horizontal and vertical		Note
Type SAS / TSD single clamp	E30 1.2 m	E60 60 cm	Bundles without limits
Type B...D strap clamp on profile rail	E30 1.2 m	E60 80 cm	Horizontal also possible with conduits
In-wall installation	E30 mineral-based wall covering on cable $\geq$ 15 mm		

Datwyler fastener	horizontal	Note
Hermann clamp S, small	E30-E60 80 cm	Maximum load: 3 kg/m (e.g. up to 15 cables 3 x 1.5 mm <sup>2</sup> )
Hermann clamp, large	E30-E60 80 cm	Maximum load: 6 kg/m (e.g. up to 30 cables 3 x 1.5 mm <sup>2</sup> )

## Installation spacing

Datwyler fastener	horizontal	Note
<b>Aluminium pipe</b>	E30 1.2 m	Bundles without limits
<b>with type SAS / TSD single clamp</b>	E60 60 cm	
<b>with type B...D strap clamp</b>	E60 80 cm	
<b>on profile rail</b>		
<b>Zero-halogen</b>	E30 1.2 m	Bundles without limits
<b>plastic armoured conduit</b>		
<b>with type SAS / TSD single clamp</b>	E60 60 cm	Separately installed cables
<b>with type B...D strap clamp</b>	E60 80 cm	1.5 mm <sup>2</sup> to 16 mm <sup>2</sup>
<b>on profile rail</b>		
<b>Steel-armoured conduit</b>	E30 1.2 m	≤ M63, filling factor ≤ 60%
<b>with type SAS / TSD single clamp</b>		Bundles without limits
<b>with type B...D strap clamp</b>		Maximum line length w/o fasteners
<b>on profile rail</b>		between ends of conduit: ≤ 1.2 m
<b>G-duct 50 x 75 mm</b>	E30 1.25 m	Maximum load: 3 kg/m
<b>with G-post or hooked rail</b>		up to 16 mm <sup>2</sup>
<b>G-duct ≤ 75 x 100 mm</b>	E30 1.25 m	Maximum load: 7.5 kg/m
<b>with G-post or with hooked rail</b>		
<b>Protective cable duct 60 x 100 mm</b>	E30 50 cm	Maximum of 16 mm <sup>2</sup>
		Maximum load:
		3.1 kg/m ceiling installation;
		7 kg/m wall installation.
<b>Cable tray 60 x ≤ 400 mm</b>	E30-E60	Maximum load: 20 kg/m.
<b>without threaded rod suspension</b>	1.5 m	Wall and ceiling installation

Cable support systems also without threaded rod			
	dependent on manufacturer		
<b>Wire mesh cable tray</b>	≤ 400 mm	1.50 m	maximum 20 kg/m
<b>Tray</b>	≤ 500 mm	1.50 m	maximum 30 kg/m
<b>Ladder</b>	≤ 600 mm	2.00 m	maximum 25 kg/m

If a Hermann clamp is used to support multiple cables with varying cross-sections, the cable with the largest cross-section must be installed below the smaller ones. When installed horizontally, the installation is the same for walls and ceilings. However, riser lines (directly fastened, using only single or bracket clamps) require the installation of an appropriate fireproof bulkhead or WUM (see page 75) at a spacing of every 3.50 m. Any certified steel fastening bolts or certified fireproof plugs from other manufacturers can be used.

In accordance with DIN 4102-12, a "slip-off protection" is necessary for horizontal wall installation using strap clamps.

# LOW-VOLTAGE CABLE E30-E60

Datwyler (N)HXCH FE180 / E30-E60 Keram  
all dimensions



## Installation spacing

Datwyler fastener	horizontal and vertical		Note
Type SAS / TSD single clamp	E30 1.2 m	E60 60 cm	Bundles without limits
Type B...D strap clamp on profile rail	E30 1.2 m	E60 80 cm	Horizontal also possible with conduits
In-wall installation	E30 mineral-based wall covering on cable $\geq 15$ mm		

Datwyler fastener	horizontal	Note
Hermann clamp S, small	E30-E60 80 cm	Maximum load: 3 kg/m (e.g. up to 15 cables 3 x 1.5 mm <sup>2</sup> )
Hermann clamp, large	E30-E60 80 cm	Maximum load: 6 kg/m (e.g. up to 30 cables 3 x 1.5 mm <sup>2</sup> )

## Installation spacing

Datwyler fastener	horizontal	Note
Aluminium pipe with type SAS / TSD single clamp with type B...D strap clamp on profile rail	E30 1.2 m E60 60 cm E60 80 cm	Bundles without limits
Zero-halogen plastic armoured conduit with type SAS / TSD single clamp with type B...D strap clamp on profile rail	E30 1.2 m E60 60 cm E60 80 cm	Bundles without limits
Steel-armoured conduit with type SAS / TSD single clamp with type B...D strap clamp on profile rail	E30 1.2 m	≤ M63, filling factor ≤ 60% Bundles without limits Maximum line length w/o fasteners between ends of conduit: ≤ 1.2 m
G-duct 50 x 75 mm with G-post or hooked rail	E30 1.25 m	Maximum load: 3 kg/m up to 16 mm <sup>2</sup>
G-duct ≤ 75 x 100 mm with G-post or hooked rail	E30 1.25 m	Maximum load: 7.5 kg/m
Protective cable duct 60 x 100 mm	E30 50 cm	Maximum of 16 mm <sup>2</sup> Maximum load: 3.1 kg/m ceiling installations; 7 kg/m wall installations.
Cable tray 60 x ≤ 400 mm without threaded rod suspension	E30-E60 1.5 m	Maximum load: 20 kg/m. Wall and ceiling installations
Cable support systems also without threaded rod	dependent on manufacturer	
Wire mesh cable tray	≤ 400 mm	1.50 m maximum 20 kg/m
Tray	≤ 500 mm	1.50 m maximum 30 kg/m
Ladder	≤ 600 mm	2.00 m maximum 25 kg/m

If a Hermann clamp is used to support multiple cables with varying cross-sections, the cable with the largest cross-section must be installed below the smaller ones. When installed horizontally, the installation is the same for walls and ceilings. However, riser lines (directly fastened, using only single or bracket clamps) require the installation of an appropriate fireproof bulkhead or WUM (see page 75) at a spacing of every 3.50 m. Any certified steel fastening bolts or certified fireproof plugs from other manufacturers can be used.

In accordance with DIN 4102-12, a "slip-off protection" is necessary for horizontal wall installation using strap clamps.

# LOW-VOLTAGE CABLE E90

Datwyler (N)HXH FE180 / E90 Keram  
all dimensions



Datwyler (N)HXCH FE180 / E90 Keram  
all dimensions



## Installation spacing

Datwyler fastener	horizontal and vertical	Note
Type SAS or TSD single clamp	60 cm	Bundles without limits
Type B...D strap clamp on profile rail	80 cm	Horizontal also possible with plastic armoured conduits
In-wall installation	E30 mineral-based wall covering on cable $\geq 15$ mm	

Datwyler fastener	horizontal	Note
Hermann clamp S, small	80 cm	Maximum load: 3 kg/m (e.g. up to 15 cables 3 x 1.5 mm <sup>2</sup> )
Hermann clamp, large	80 cm	Maximum load: 6 kg/m (e.g. up to 30 cables 3 x 1.5 mm <sup>2</sup> )

## Installation spacing

Datwyler fastener	horizontal	Note
<b>Zero-halogen plastic armoured conduit with type SAS / TSD single clamp</b>	60 cm	Bundles up to 2.5 kg/m without limits
<b>Zero-halogen plastic armoured conduit with type B...D strap clamp on profile rail</b>	80 cm	
<b>Cable tray 60 x ≤ 400 mm without threaded rod suspension</b>	1.5 m	Maximum load: 20 kg/m. Wall and ceiling installations

Cable support systems also without threaded rod	dependent on manufacturer		
<b>Wire mesh cable tray</b>	≤ 400 mm	1.50 m	maximum 20 kg/m
<b>Tray</b>	≤ 500 mm	1.50 m	maximum 30 kg/m
<b>Ladder</b>	≤ 600 mm	1.50 m	maximum 20 kg/m

If a Hermann clamp is used to support multiple cables with varying cross-sections, the cable with the largest cross-section must be installed below the smaller ones. When installed horizontally, the installation is the same for walls and ceilings. However, riser lines (directly fastened, using only single or bracket clamps) require the installation of an appropriate fireproof bulkhead or WUM (see page 75) at a spacing of every 3.50 m. Any certified steel fastening bolts or certified fireproof plugs from other manufacturers can be used.

In accordance with DIN 4102-12, a “slip-off protection” is necessary for horizontal wall installation using strap clamps.

# JE-H(ST)H E30-E90

Datwyler Keramik

Datwyler JE-H(ST)H...Bd FE180/E30-E90 Keramik

Colour: red, with inscription for fire alarm cable



Datwyler JE-H(ST)H...Bd FE180/E30 L Keramik

Colour: red, with inscription for fire alarm cable



Datwyler JE-H(ST)H...Bd FE180/E30-E90 Keramik

Colour: orange



Datwyler JE-H(ST)H...Bd FE180/E30 L Keramik

Colour: orange



Datwyler JE-H(ST)HRH...Bd FE180/E30-E90 Keramik

Colour: red, with inscription for fire alarm cable



## Installation spacing

Datwyler fastener	horizontal and vertical	Note
Type SAS / TSD single clamp	E30-E60 1.2 m E90 60 cm	Bundles up to 2.5 kg/m
Tyoe B...D strap clamp on profile rail	E30-E60 1.2 m E90 80 cm	Horizontal also possible with conduits
In-wall installation	Mineral-based wall covering on cable $\geq$ 15 mm	
Datwyler fastener	horizontal	Note
Hermann clamp S, small	E30-E60 80 cm E90 60 cm	Maximum load: 3 kg/m
Hermann clamp, large	E30-E60 80 cm E90 60 cm	Maximum load: 3 kg/m

## Installation spacing

Datwyler fastener	horizontal	Note
<b>Aluminium pipe</b>	E30-E60 1.2 m	Bundles up to 2.5 kg/m
<b>with type SAS / TSD single clamp</b>	E90 60 cm	
<b>with type B...D strap clamp</b>	E90 80 cm	
<b>on profile rail</b>		
<b>Zero-halogen</b>	E30-E60 1.2 m	Bundles up to 2.5 kg/m
<b>plastic armoured conduit</b>		
<b>with type SAS / TSD single clamp</b>	E90 60 cm	
<b>with type B...D strap clamp</b>	E90 80 cm	
<b>on profile rail</b>		
<b>Steel-armoured conduit</b>	E30-E60 1.2 m	≤ M63, filling factor ≤ 60%
<b>with type SAS / TSD single clamp</b>		Maximum load: 2,5 kg/m
<b>with type B...D strap clamp</b>		Maximum line length w/o fasteners
<b>on profile rail</b>		between ends of conduit: 1.2 m
<b>G-duct 50 x 75 mm</b>	E30 1.25 m	Maximum load: 3 kg/m
<b>with G-post or hooked rail</b>		
<b>G-duct ≤ 75 x 100 mm with G-post</b>	E30 1.25 m	Maximum load: 7.5 kg/m
<b>or with hooked rail</b>		
<b>Protective cable duct 60 x 100 mm</b>	E30 50 cm	Maximum load: 3.1 kg/m ceiling installations, 7 kg/m wall installations
<b>Protective cable duct 26 x 30 mm</b>	E30 50 cm	Maximum load: 0.3 kg/m
		Wall and ceiling installations

Cable support systems also without threaded rod	dependent on manufacturer		
<b>Wire mesh cable tray</b>	≤ 400 mm	1.25 m	maximum 10 kg/m
<b>Tray</b>	≤ 500 mm	1.50 m	maximum 20 kg/m
<b>Ladder</b>	≤ 600 mm	2.00 m	maximum 25 kg/m

When installed horizontally, the installation is the same for walls and ceilings. However, riser lines (directly fastened using only single or bracket clamps) require the installation of an appropriate fireproof bulkhead or WUM (see page 75) at a spacing of every 3.50 m. Any certified steel fastening bolts or certified fireproof plugs from other manufacturers can be used.

For cable constructions ... E30 L: classifications apply only up to E30.

In accordance with DIN 4102-12, a "slip-off protection" is necessary for horizontal wall installation using strap clamps.

# FIBRE OPTIC SAFETY CABLE

Functional integrity for 30 minutes according to DIN 4102-12 (E30)  
“Functional integrity” in accordance with IEC 60331-25 FE 90 (90 minutes at 750 °C)

## FO Universal ZGGFR Safety



U-DQ(ZN)BH 1xm	Fibres	Article No.	Article No.	Article No.	Article No.	
Description	number	E9/125 G.652.D	G50/125 OM2	G50/125 OM3	G62.5/125 OM1	
ZGGFR Safety	1 x 4	4	187288	186363	190604	186638
ZGGFR Safety	1 x 6	6	191867	186639	191851	190792
ZGGFR Safety	1 x 8	8	on request	190621	on request	on request
ZGGFR Safety	1 x 12	12	190719	187293	191796	187305

## FO Universal wbGGFR Safety



U-DQ(ZN)BH nxm		Fibres	Article No.	Article No.	Article No.	Article No.
Description		number	E9/125 G.652.D	G50/125 OM2	G50/125 OM3	G62.5/125 OM1
<b>wbGGFR Safety</b>	2 x 12	24	190223	187294	187360	on request
<b>wbGGFR Safety</b>	3 x 12	36	190224	on request	on request	on request
<b>wbGGFR Safety</b>	4 x 12	48	190225	192119	191191	on request
<b>wbGGFR Safety</b>	5 x 12	60	190226	on request	190605	on request

# FIBRE OPTIC SAFETY CABLE

Functional integrity for 30 minutes according to DIN 4102-12 (E30)

## Features

Metal-free fibre optic safety cable with up to 12 fibres or up to 60 fibres.

The optimal combination of flame retardant fibre coating and flame-inhibiting stabilizing elements ensures enhanced functional integrity (System Circuit Integrity) in case of fire for 30 minutes.

## Application

Safety applications in tunnels, underground railways, banks, insurance companies, large-scale industry. LAN backbones.

Indoor and outdoor cabling.

Can be installed in cable platforms, trays, ducts and vertical shafts.

Can be spliced in fibre optic distribution housings.

## Installation spacing

Datwyler fastener	horizontal	vertical
Strap clamp on profile rail	60 cm	

Cable support systems also without threaded rod	dependent on manufacturer		
Wire mesh cable tray	≤ 300 mm	1.20 m	maximum 10 kg/m
Tray	≤ 300 mm	1.20 m	maximum 10 kg/m

# LOW-VOLTAGE CABLES

(N)HXH FE180 / E30-E60 Keram



(N)HXH CL FE 180 / E30-E60 Keram



(N)HXCH FE180 / E30-E60 Keram



(N)HXH FE180 / E90 Keram



(N)HXCH FE180 / E90 Keram



## Technical data

Nominal voltage	0.6/1 kV
Testing voltage	4000 V, 50 Hz
Operating temperature	-5 °C to +90 °C

## Application

Datwyler safety cables with improved properties in case of fire and with integrated functional integrity can be installed indoors. When installed outdoors, they must be protected against direct sunlight (orange sheath). It is only permitted to install them directly into the earth or water when a protective conduit is used. These cables fulfil the requirements for functional integrity E30-E60 or E90 in accordance with DIN 4102-12. Functional integrity is guaranteed for operating voltages up to 400 V.

## Application in accordance with DIN VDE 0266 (regardless of functional integrity)

### Permissible application areas:

Cables compliant with this standard may only be installed indoors, in the air or in concrete. These cables are not intended for installations in the earth or water. However, it is permissible to install them in protective conduits as long as measures are implemented to prevent water from gathering in the conduits.

### Application

#### Cable end seal:

The cable ends must be fitted with waterproof seals during shipping, storage and installation

### Installation

#### In general:

Cables must be installed and operated in such a manner as to ensure that their properties are not compromised.

Amongst other aspects, observe the following points:

- Operating conditions such as grouping of cables, effects from external heat sources and protection against direct sunlight must be taken into consideration when choosing the cable type.
- Stray currents and corrosion
- Vibrations (machine foundations, bridges), vibrations
- To prevent mechanical damage, choose an installation procedure suitable for the type of external sheathing.
- Protection against external agents, e.g., chemical solvents
- Loads from short-circuit surge currents (dynamic)

Cables must be protected against mechanical damage after installation.

The interior diameter of cable conduits and ducts must be at least 1.5 times larger than the cable diameter.

#### Lowest permissible installation temperature

The lowest permissible installation temperature is  $-5^{\circ}\text{C}$ .

This temperature applies for the cable itself but not for the surroundings. If the temperature of the cables is too low, warm them up.

Make sure that the temperature does not drop below the lowest permissible temperature during the entire installation process.

#### Tensile load:

When pulling copper cables using a cable tensioning device, the maximum tension is  $50\text{ N/mm}^2$  per conductor. (except for concentric conductors.)

#### Bending radius:

During the installation, the bending radius must not fall below the following values:

15-times cable diameter for single-core cables

12-times cable diameter for multicore cables

When bent only once in the proper manner using the bending template and by heating the cable to  $30^{\circ}\text{C}$ , it is permissible to reduce the bending radius by 50%.

#### Assembly:

In horizontal installations, never exceed a spacing of 80 cm for fasteners or supports.

In vertical installations, never exceed a fastener spacing of 150 cm.

When installing single-core cables, use clips made of plastic or non-magnetic metals.

Steel clips may only be used if the magnetic circuit is not closed or when the cable is bundled triangularly.

To maintain functional integrity, only use system-certified fasteners compliant with DIN 4102-12.

Fasten cables and groups of cables so that they will not become damaged by pressure points resulting from thermal expansion.

# (N)HXH FE180 / E30-E60

Datwyler Keram

## Low-voltage cable 0.6/1kV

Based on DIN VDE 0266

Zero halogen content, improved fire properties

Insulation integrity FE180 in accordance with DIN VDE 0472-814, IEC 60331

Functional integrity E30-E60\* in accordance with DIN 4102-12



Article No.	No. cores x cross-section n x mm <sup>2</sup>		Cu number kg/km	Weight kg/km	Diameter approx. mm	Fire load kWh/m
<b>(N)HXH FE180 / E30-E60 Keram</b>						
171289	1 x 4	RE	38	90	7.1	0.21
171290	1 x 6	RE	58	113	7.6	0.23
171291	1 x 10	RE	96	158	8.4	0.27
171370	1 x 16	RM	154	227	9.8	0.34
171377	1 x 25	RM	240	329	11.3	0.43
171386	1 x 35	RM	336	428	12.4	0.48
171394	1 x 50	RM	480	565	13.9	0.58
171429	1 x 70	RM	672	783	15.7	0.68
170842	1 x 95	RM	912	1054	18.1	0.91
170845	1 x 120	RM	1152	1281	19.2	0.97
170850	1 x 150	RM	1440	1606	21.4	1.20
170855	1 x 185	RM	1776	1983	23.6	1.46
170858	1 x 240	RM	2304	2607	26.8	1.81
186280	2 x 1.5	RE	29	178	11.0	0.48
186921	2 x 2.5	RE	48	217	11.0	0.54
186922	2 x 4	RE	77	272	11.8	0.62
186923	2 x 6	RE	115	337	12.8	0.70
186924	2 x 10	RE	192	459	13.8	0.83
186952	2 x 16	RM	307	661	15.4	1.09
187221	2 x 25	RM	480	950	18.2	1.42
186925	3 x 1.5	RE	43	200	11.5	0.53
186926	3 x 2.5	RE	72	250	12.4	0.60
186927	3 x 4	RE	115	319	13.5	0.68
186928	3 x 6	RE	173	403	14.6	0.77
186929	3 x 10	RE	288	560	16.3	0.91
186953	3 x 16	RM	461	811	19.3	1.19
186955	3 x 25	RM	720	1184	22.6	1.56
186957	3 x 35	RM	1008	1529	24.9	1.80
186959	3 x 50	RM	1440	2026	28.2	2.24
186961	3 x 70	RM	2016	2844	32.7	2.88
186954	3 x 25 + 1 x 16	RM	874	1361	23.9	1.73
186956	3 x 35 + 1 x 16	RM	1162	1692	25.9	1.93
186958	3 x 50 + 1 x 25	RM	1680	2311	29.9	2.52
186960	3 x 70 + 1 x 35	RM	2352	3171	34.0	3.07

\*) The functional integrity depends on the installation technique used.

Article No.	No. cores x cross-section n x mm <sup>2</sup>		Cu number kg/km	Weight kg/km	Diameter approx. mm	Fire load kWh/m
<b>(N)HXH FE180 / E30-E60 Keram</b>						
186962	3 x 95 + 1 x 50	RM	3216	4276	39.3	4.18
186963	3 x 120 + 1 x 70	RM	4128	5303	42.6	4.74
186964	3 x 150 + 1 x 70	RM	4992	6417	46.6	5.63
186965	3 x 185 + 1 x 95	RM	6240	8040	52.0	6.99
186930	4 x 1.5	RE	58	234	12.4	0.61
186931	4 x 2.5	RE	96	296	13.4	0.69
186932	4 x 4	RE	154	381	14.6	0.78
186933	4 x 6	RE	230	490	15.8	0.90
186934	4 x 10	RE	384	695	17.8	1.07
186967	4 x 16	RM	614	1009	21.1	1.40
186968	4 x 25	RM	960	1485	24.8	1.86
186969	4 x 35	RM	1344	1929	27.4	2.15
186970	4 x 50	RM	1920	2600	31.5	2.79
186971	4 x 70	RM	2688	3618	36.2	3.38
186972	4 x 95	RM	3648	4860	41.7	4.68
186973	4 x 120	RM	4608	5890	44.6	5.19
186974	4 x 150	RM	5760	7417	50.0	6.52
186935	5 x 1.5	RE	72	278	13.4	0.71
186936	5 x 2.5	RE	120	353	14.5	0.81
186937	5 x 4	RE	192	456	15.8	0.93
186938	5 x 6	RE	288	589	17.2	1.05
186939	5 x 10	RE	480	832	19.3	1.25
186975	5 x 16	RM	768	1223	23.1	1.67
186976	5 x 25	RM	1200	1806	27.2	2.22
186977	5 x 35	RM	1680	2384	30.5	2.66
186978	5 x 50	RM	2400	3187	34.8	3.41
171272	7 x 1.5	RE	101	331	14.4	0.81
171273	7 x 2.5	RE	168	426	15.6	0.92
171279	12 x 1.5	RE	173	513	18.3	1.20
171280	12 x 2.5	RE	288	675	20.0	1.37
171283	19 x 1.5	RE	274	715	21.2	1.63
171284	19 x 2.5	RE	456	953	23.2	1.83
171285	24 x 1.5	RE	346	901	24.6	1.99
171286	24 x 2.5	RE	576	1205	27.0	2.27
171287	30 x 1.5	RE	432	1057	26.0	2.28
171288	30 x 2.5	RE	720	1446	28.8	2.68

# (N)HXH CL FE 180 / E30-E60

Datwyler Keram

## Low-voltage cable 0.6/1kV

Based on DIN VDE 0266

Zero halogen content, improved fire properties

Insulation integrity FE180 in accordance with DIN VDE 0472-814, IEC 60331

Functional integrity E30-E60\* in accordance with DIN 4102-12



Article No.	No. cores x cross-section n x mm <sup>2</sup>		Cu number kg/km	Weight kg/km	Diameter approx. mm	Fire load kWh/m
(N)HXH CL FE 180 / E30-E60 Keram						
192350	2x1.5	RE	29	336	15	0.94
187562	2x2.5	RE	48	385	16	1.02
191612	2x4	RE	77	453	17	1.13
187563	2x6	RE	115	531	18	1.25
	2x10	RE	192	673	19	1.43
	2x16	RM	307	910	22	1.79
	2x25	RM	480	1239	25	2.22
	2x35	RM	672	1536	27	2.64
	2x50	RM	960	1956	30	3.04
	2x70	RM	1344	2640	35	3.79
	2x95	RM	1824	3475	39	4.89
	2x120	RM	2304	4118	42	5.47
	2x150	RM	2880	5086	46	6.62
	2x185	RM	3552	6268	51	8.13
191107	3x1.5	RE	43	363	15	1
186940	3x2.5	RE	72	425	16	1.1
192351	3x4	RE	115	509	17	1.22
188326	3x6	RE	173	607	19	1.35
191597	3x10	RE	288	785	20	1.54
188327	3x16	RM	461	1074	23	1.93
	3x25	RM	720	1491	27	2.41
	3x35	RM	1080	1865	29	2.73
	3x50	RM	1440	2404	32	3.29
	3x70	RM	2016	3314	37	4.22
	3x95	RM	2736	4369	42	5.42
	3x120	RM	3456	5221	45	6.04
	3x150	RM	4320	6460	50	7.3
	4x1.5	RE	58	410	16	1.11
190590	4x2.5	RE	96	484	17	1.22
191102	4x4	RE	154	585	19	1.36
	4x6	RE	230	709	20	1.51
	4x10	RE	384	940	22	1.76
186980	4x16	RM	614	1296	25	2.2
186981	4x25	RM	960	1820	29	2.78

\*) This cable needs a permission for functional integrity installations in each individual case before being installed.

# (N)HXH CL FE 180 / E30-E60

Datwyler Keram

Article No.	No. cores x cross-section n x mm <sup>2</sup>	Cu number kg/km	Weight kg/km	Diameter approx. mm	Fire load kWh/m
-------------	--	--------------------	-----------------	------------------------	--------------------

## (N)HXH CL FE 180 / E30-E60 Keram

186982	4x35	RM	1344	2296	31	3.16
190589	4x50	RM	1920	3037	36	4.02
	4x70	RM	2688	4157	41	5.05
	4x95	RM	3648	5498	46	6.52
	4x120	RM	4608	6595	50	7.26
192347	5x15	RE	72	466	17	1.25
188117	5x25	RE	120	556	18	1.38
188118	5x4	RE	192	675	20	1.54
186941	5x6	RE	288	825	21	1.72
186942	5x10	RE	480	1095	23	1.98
190525	5x16	RM	768	1536	27	2.53
186984	5x25	RM	1200	2171	31	3.23
190529	5x35	RM	1680	2808	35	3.85
191565	5x50	RM	2400	3686	39	4.83
	5x70	RM	3360	5053	45	6.05
	5x95	RM	4560	6792	52	8.14
	6x1.5	RE	86	521	18	1.39
	6x2.5	RE	144	624	20	1.54
188094	6x4	RE	230	769	21	1.74
	6x6	RE	346	943	23	1.94
	6x10	RE	576	1269	25	2.26
185232	7x1.5	RE	101	532	18	1.38
	7x2.5	RE	168	643	20	1.53
185245	7x4	RE	269	798	21	1.71
185247	7x6	RE	403	987	23	1.9
185248	7x10	RE	672	1343	25	2.2
	8x1.5	RE	115	604	20	1.53
	8x2.5	RE	192	732	21	1.69
188095	8x4	RE	307	916	23	1.91
	10x1.5	RE	144	701	22	1.78
	10x2.5	RE	240	857	23	1.98
	10x4	RE	384	1079	25	2.24
	12x1.5	RE	173	763	22	1.9
185239	12x2.5	RE	288	948	24	2.13
	12x4	RE	461	1205	26	2.42
	14x1.5	RE	202	847	23	2.07
	14x2.5	RE	336	1062	25	2.34
185233	16x1.5	RE	231	926	24	2.24
	16x2.5	RE	384	1154	26	2.52
	21x1.5	RE	303	1092	26	2.58
	21x2.5	RE	504	1381	28	2.89
	27x1.5	RE	389	1311	29	3.06
	27x2.5	RE	648	1681	32	3.45
185235	30x1.5	RE	432	1407	30	3.25
185241	30x2.5	RE	720	1847	33	3.81

1. Background Information

2. By Installation Type

3. By Cable Type

4. Product Range

5. Assembly Instructions

6. FAQ

# (N)HXCH FE180 / E30-E60

Datwyler Keram

## Low-voltage cable 0.6/1kV

Based on DIN VDE 0266

Zero halogen content, improved fire properties

Insulation integrity FE180 in accordance with DIN VDE 0472-814, IEC 60331

Functional integrity E30-E60\* in acc. with DIN 4102-12



Article No.	No. cores x cross-section n x mm²		Cu number kg/km	Weight kg/km	Diameter approx. mm	Fire load kWh/m
(N)HXCH FE180 / E30-E60 Keram						
186943	2 x 1.5	RE/1.5	52	224	12.7	0.60
186944	2 x 2.5	RE/2.5	80	273	13.5	0.66
187232	2 x 4	RE/4	123	355	15.0	0.78
187234	2 x 6	RE/6	182	436	16.0	0.86
187236	2 x 10	RE/10	312	622	17.7	1.07
186945	3 x 1.5	RE/1.5	66	248	13.2	0.65
186946	3 x 2.5	RE/2.5	104	308	14.1	0.72
187233	3 x 4	RE/4	161	404	15.7	0.84
187235	3 x 6	RE/6	240	504	16.8	0.94
187237	3 x 10	RE/10	408	727	18.6	1.15
187238	3 x 16	RM/16	643	1148	23.9	1.63
187239	3 x 25	RM/16	902	1437	25.0	1.90
187240	3 x 35	RM/16	1190	1796	27.3	2.20
187241	3 x 50	RM/25	1723	2408	30.8	2.84
187242	3 x 70	RM/35	2410	3381	36.0	3.52
186985	3 x 95	RM/50	3296	4513	41.1	4.66
186986	3 x 120	RM/70	4236	5576	44.5	5.30
186987	3 x 150	RM/70	5100	7094	49.2	6.46
187243	3 x 185	RM/95	6383	8300	56.0	7.90
186988	3 x 240	RM/120	8242	11065	61.5	9.93
186947	4 x 1.5	RE/1.5	81	286	14.1	0.73
186948	4 x 2.5	RE/2.5	128	358	15.1	0.82
186949	4 x 4	RE/4	200	473	16.8	0.96
186950	4 x 6	RE/6	297	621	18.1	1.13
186951	4 x 10	RE/10	504	868	20.1	1.33
186989	4 x 16	RM/16	796	1254	23.4	1.70
186990	4 x 25	RM/16	1142	1752	27.2	2.20
186991	4 x 35	RM/16	1526	2218	29.8	2.56
186992	4 x 50	RM/25	2203	3049	34.8	3.41
186993	4 x 70	RM/35	3082	4198	39.5	4.18
186994	4 x 95	RM/50	4208	5610	45.2	5.58
186995	4 x 120	RM/70	5388	6954	49.1	6.37
186996	4 x 150	RM/70	6540	8512	54.3	7.83
186997	4 x 185	RM/95	8159	10619	59.8	9.55
186998	4 x 240	RM/120	10546	13852	67.9	12.00
187244	7 x 1.5	RE/2.5	133	393	16.1	0.94
187245	30 x 1.5	RE/6	499	1252	29.1	2.67

Low-voltage cable 0.6/1kV

Based on DIN VDE 0266

Zero halogen content, improved fire properties

Insulation integrity FE180 in accordance with DIN VDE 0472-814, IEC 60331

Functional integrity E90 in accordance with DIN 4102-12



Article No.	No. cores x cross-section n x mm <sup>2</sup>		Cu number kg/km	Weight kg/km	Diameter approx. mm	Fire load kWh/m
-------------	--	--	--------------------	-----------------	------------------------	--------------------

(N)HXH FE180 / E90 Keram

186141	1 x 16	RM	154	243	10.2	0.35
186142	1 x 25	RM	240	347	11.7	0.43
186143	1 x 35	RM	336	449	12.8	0.49
186144	1 x 50	RM	480	589	14.3	0.58
186145	1 x 70	RM	672	810	16.1	0.67
186146	1 x 95	RM	912	1090	18.5	0.85
186147	1 x 120	RM	1152	1318	19.6	0.91
186148	1 x 150	RM	1440	1648	21.8	1.11
186149	1 x 185	RM	1776	2029	24.0	1.32
186150	1 x 240	RM	2304	2658	27.2	1.63
186151	1 x 300	RM	2880	3166	29.6	1.91
187246	2 x 1.5	RE	29	178	11.0	0.48
187247	2 x 2.5	RE	48	217	11.8	0.54
187248	2 x 4	RE	77	272	12.8	0.62
187249	2 x 6	RE	115	337	13.8	0.70
187250	2 x 10	RE	192	459	15.4	0.83
187254	2 x 16	RM	307	714	19.0	1.19
187255	2 x 25	RM	480	1011	22.0	1.54
187256	2 x 35	RM	672	1287	24.2	1.79
187257	2 x 50	RM	960	1742	28.0	2.35
187258	2 x 70	RM	1344	2346	31.6	2.86
187259	2 x 95	RM	1824	3130	36.2	3.67
187260	2 x 120	RM	2304	3729	38.6	4.11
186174	3 x 1.5	RE	43	200	11.5	0.53
186177	3 x 2.5	RE	72	250	12.4	0.60
186182	3 x 4	RE	115	319	13.5	0.68
186186	3 x 6	RE	173	403	14.6	0.77
186189	3 x 10	RE	288	560	16.3	0.91
186152	3 x 16	RM	461	878	20.2	1.29
186153	3 x 25	RM	720	1299	24.0	1.75
186154	3 x 35	RM	1008	1664	26.4	2.02
186207	3 x 50	RM	1440	2189	29.8	2.51
187261	3 x 70	RM	2016	2997	33.9	3.09
187262	3 x 95	RM	2736	4007	38.9	3.95
187263	3 x 120	RM	3456	4812	41.5	4.39
187264	3 x 150	RM	4320	5988	46.0	5.32

\*) The functional integrity depends on the installation technique used.

# (N)HXH FE180 / E90

Datwyler Keram

Article No.	No. cores x cross-section n x mm <sup>2</sup>		Cu number kg/km	Weight kg/km	Diameter approx. mm	Fire load kWh/m
(N)HXH FE180 / E90 Keram						
187265	3 x 185	RM	5328	7363	50.7	6.44
187266	3 x 240	RM	6912	9632	57.6	8.10
187267	3 x 35 + 1 x 16	RM	1162	1833	27.4	2.13
187268	3 x 50 + 1 x 25	RM	1680	2457	31.3	2.69
187269	3 x 70 + 1 x 35	RM	2352	3362	35.6	3.34
187270	3 x 95 + 1 x 50	RM	3216	4488	40.7	4.24
187271	3 x 120 + 1 x 70	RM	4128	5532	44.0	4.82
187272	3 x 150 + 1 x 70	RM	4992	6666	48.0	5.70
187273	3 x 185 + 1 x 95	RM	6240	8315	53.4	7.00
186175	4 x 1.5	RE	58	234	12.4	0.61
186178	4 x 2.5	RE	96	296	13.4	0.69
186183	4 x 4	RE	154	381	14.6	0.78
186187	4 x 6	RE	230	490	15.8	0.90
186190	4 x 10	RE	384	695	17.8	1.07
186155	4 x 16	RM	614	1089	22.1	1.54
186156	4 x 25	RM	960	1618	26.3	2.05
186157	4 x 35	RM	1344	2083	29.0	2.36
186158	4 x 50	RM	1920	2752	32.8	2.97
186159	4 x 70	RM	2688	3804	37.6	3.55
186160	4 x 95	RM	3648	5092	43.1	4.75
187274	4 x 120	RM	4608	6133	46.0	5.27
186161	4 x 150	RM	5760	7662	51.2	6.49
187275	4 x 185	RM	7104	9425	56.5	7.85
187276	4 x 240	RM	9216	12334	64.1	9.85
186176	5 x 1.5	RE	72	278	13.4	0.71
186179	5 x 2.5	RE	120	353	14.5	0.81
186184	5 x 4	RE	192	456	15.8	0.93
186188	5 x 6	RE	288	589	17.2	1.05
186191	5 x 10	RE	480	832	19.3	1.25
186162	5 x 16	RM	768	1361	24.8	1.86
186163	5 x 25	RM	1200	1960	28.8	2.42
186164	5 x 35	RM	1680	2547	32.0	2.86
186165	5 x 50	RM	2400	3392	36.5	3.68
187277	5 x 70	RM	3360	4667	41.5	4.51
185271	7 x 1.5	RE	101	331	14.4	0.81
186180	7 x 2.5	RE	168	426	15.6	0.92
186185	7 x 4	RE	269	563	17.1	1.05
172260	10 x 1.5	RE	144	457	17.8	1.09
187253	10 x 2.5	RE	240	593	19.4	1.24
185272	12 x 1.5	RE	173	513	18.3	1.20
186181	12 x 2.5	RE	288	675	20.0	1.37
185273	24 x 1.5	RE	346	901	24.6	1.99

**Niederspannungskabel 0,6/1kV**

In Anlehnung an DIN VDE 0266

Halogenfrei, mit verbessertem Verhalten im Brandfall

Isolationserhalt FE180 nach DIN VDE 0472-814, IEC 60331

Funktionserhalt E90 nach DIN 4102-12



Article No.	No. cores x cross-section n x mm <sup>2</sup>		Cu number kg/km	Weight kg/km	Diameter approx. mm	Fire load kWh/m
<b>(N)HXCH FE180 / E90 Keram</b>						
186071	3 x 1.5	RE/1.5	66	248	13.2	0.65
186195	3 x 2.5	RE/2.5	104	308	14.10	0.72
186197	3 x 4	RE/4	161	404	15.7	0.84
187278	3 x 6	RE/6	240	504	16.80	0.94
187279	3 x 10	RE/10	408	727	18.6	1.15
187251	3 x 16	RM/16	643	1166	24.4	1.64
187406	3 x 25	RM/16	902	1496	25.8	1.95
172417	3 x 35	RM/16	1190	1820	28.2	2.25
187408	3 x 50	RM/25	1723	2493	32.5	2.90
187409	3 x 70	RM/35	2410	3350	36.1	3.42
187410	3 x 95	RM/50	3296	4570	42.0	4.50
187411	3 x 120	RM/70	4236	5620	45.4	5.02
187412	3 x 150	RM/70	5100	6850	50.7	6.00
187413	3 x 185	RM/95	6383	8350	55.0	7.10
187414	3 x 240	RM/120	8242	11100	62.1	9.08
186072	4 x 1.5	RE/1.5	81	286	14.1	0.73
186196	4 x 2.5	RE/2.5	128	358	15.1	0.82
186198	4 x 4	RE/4	200	473	16.8	0.96
186199	4 x 6	RE/6	297	621	18.1	1.13
186200	4 x 10	RE/10	504	868	20.1	1.33
186131	4 x 16	RM/16	796	1400	24.5	1.81
186132	4 x 25	RM/16	1142	1895	28.1	2.28
186133	4 x 35	RM/16	1526	2376	30.8	2.60
186134	4 x 50	RM/25	2203	3249	35.9	3.49
186135	4 x 70	RM/35	3082	4426	40.5	4.25
186136	4 x 95	RM/50	4208	5809	46.4	5.53
186137	4 x 120	RM/70	5388	7134	50.1	6.25
186138	4 x 150	RM/70	6540	8703	55.3	7.58
186139	4 x 185	RM/95	8159	10827	60.8	9.18
186140	4 x 240	RM/120	10546	14139	69.2	11.60
186073	7 x 1.5	RE/2.5	133	393	16.1	0.94
187280	7 x 2.5	RE/2.5	200	491	17.3	1.05
187415	12 x 1.5	RE/2.5	205	595	20.2	1.38
172454	12 x 2.5	RE/4	334	798	22.6	1.63
187402	24 x 1.5	RE/6	413	901	27.4	2.32
187403	24 x 2.5	RE/10	696	1205	30.6	2.69
187404	30 x 1.5	RE/6	499	1252	29.1	2.67
187405	30 x 2.5	RE/10	840	1692	32.2	3.11

# INSTALLATION CABLES

## JE-H(ST)H...Bd FE180 / E30-E90 Keram



## JE-H(ST)H...Bd FE180 / E30 L Keram



## JE-H(ST)H...Bd FE180 / E30-E90 Keram



## JE-H(ST)H...Bd FE180 / E30 L Keram



## JE-H(ST)HRH...Bd FE 180 / E30-E90 Keram



## Technical data

Nominal voltage	maximum = 225 V
Testing voltage	500 V, 50 Hz conductor/conductor 2000 V, 50 Hz conductor/shield
Operating temperature	-5 °C to +70 °C

## Application

Datwyler safety cables are used whenever extra protection is required against fires and to reduce hazards for humans and property, and also when strict safety regulations must be complied with. They may be installed indoors. These cables comply with functional integrity requirements E30-E90\* in accordance with DIN 4102-12. Functional integrity is guaranteed for operating voltages up to 110 V, for signal and control applications, fire detection systems, electroacoustic alarm systems and SHE, for example. When installed outdoors, the cables must be protected against direct sunlight (orange sheath; fire alarm cables BMK: red sheath). Permissible operating temperature at conductor: +70 °C.



## Installation cable, maximum 225 V

Compliant with DIN VDE 0815, zero halogen content, improved fire properties

Insulation integrity FE180 in accordance with DIN VDE 0472-814, IEC 6033,

Functional integrity E30-E90\* in accordance with DIN 4102-12.

Article No.	No. cores x cross-section n x 2 x mm	Cu number kg/km	Weight kg/km	Diameter approx. mm	Fire load kWh/m
<b>JE-H(ST)H...Bd FE180 / E30-E90 Keramik</b>					
188092	1 x 2 x 0.8	15	40	5.5	0.095
188097	2 x 2 x 0.8	25	56	6.0	0.123
188099	4 x 2 x 0.8	45	96	8.7	0.210
188102	8 x 2 x 0.8	85	218	13.7	0.520
188104	12 x 2 x 0.8	126	270	14.6	0.580
188106	16 x 2 x 0.8	166	337	16.0	0.690
188108	20 x 2 x 0.8	206	403	18.0	0.800
188111	32 x 2 x 0.8	326	570	21.8	1.020
188113	40 x 2 x 0.8	407	739	25.3	1.380
188115	52 x 2 x 0.8	529	906	27.6	1.590

## JE-H(ST)H...Bd FE180 / E30 L Keramik

188376	1 x 2 x 0.8	15	40	5.5	0.095
188318	2 x 2 x 0.8	25	56	6.0	0.123
188325	4 x 2 x 0.8	45	96	8.7	0.210



## Fire alarm cable, maximum 225 V

Compliant with DIN VDE 0815, zero halogen content, improved fire properties

Insulation integrity FE180 in accordance with DIN VDE 0472-814, IEC 60331

Functional integrity E30-E90\* in accordance with DIN 4102-12

Article No.	No. cores x cross-section n x 2 x mm	Cu number kg/km	Weight kg/km	Diameter approx. mm	Fire load kWh/m
<b>JE-H(ST)H...Bd FE180 / E30-E90 BMK red Keramik</b>					
188093	1 x 2 x 0.8	15	40	5.5	0.095
188098	2 x 2 x 0.8	25	56	6.0	0.123
188101	4 x 2 x 0.8	45	96	8.7	0.210
188103	8 x 2 x 0.8	85	218	13.7	0.520
188105	12 x 2 x 0.8	126	270	14.6	0.580
188107	16 x 2 x 0.8	166	337	16.0	0.690
188109	20 x 2 x 0.8	206	403	18.0	0.800
188112	32 x 2 x 0.8	326	570	21.8	1.020
188114	40 x 2 x 0.8	407	739	25.3	1.380
188116	52 x 2 x 0.8	529	906	27.6	1.590

## JE-H(ST)H...Bd FE180 / E30 L BMK red Keramik

188377	1 x 2 x 0.8	15	40	5.5	0.095
188374	2 x 2 x 0.8	25	56	6.0	0.123
188375	4 x 2 x 0.8	45	96	8.7	0.210

\*) The functional integrity depends on the installation technique used.

# JE-H(ST)HRH...BD FE180 / E30-E90

Datwyler Keramik

## Fire alarm cable with steel-wire braiding

(maximum 225 V)

Based on DIN VDE 0815

Zero halogen content, improved fire properties

Insulation integrity FE180 in accordance with DIN VDE 0472-814, IEC 60331

Functional integrity E30-E60\* in accordance with DIN 4102-12



Article No.	No. cores x cross-section n x 2 x mm	Cu number kg/km	Weight kg/km	Diameter approx. mm	Fire load kWh/m
<b>JE-H(ST)HRH...Bd FE180 / E30-E90 Keramik</b>					
188119	2 x 2 x 0.8	15	117	9.0	0.26
188120	4 x 2 x 0.8	25	179	11.7	0.39
188127	8 x 2 x 0.8	85	404	18.0	0.93
188128	12 x 2 x 0.8	126	466	18.9	1.01
188129	20 x 2 x 0.8	206	640	22.3	1.32
188346	32 x 2 x 0.8	326	877	26.5	1.72
188347	40 x 2 x 0.8	407	1118	30.4	2.28
188348	52 x 2 x 0.8	529	1318	32.7	2.57

\*) The functional integrity depends on the installation technique used.

## FO Universal ZGGFR Safety



## FO Universal wbGGFR Safety



### Application

Fibre optic safety cables for indoor and outdoor applications, metal-free central core design with up to 12 fibres and 5 bundles. The optimised fibre coating and flame-retardant stabilisers enable functional integrity (system circuit integrity) for more than 30 minutes when using Datwyler installation systems.

## FO Universal ZGGFR Safety

Safety cables for indoor and outdoor applications

Metal-free, watertight along longitudinal axis, anti-rodent, flame-retardant

Compliant with IEC 60332.1 and IEC 60332.3 C, functional integrity for 30 minutes according to DIN 4102-12 (E30), "Functional integrity" in accordance with IEC 60331-25 FE 90 (90 minutes at 750 °C)



U-DQ(ZN)BH 1xm	Fibres	Article No.	Article No.	Article No.	Article No.
Name	Number	E9/125 G.652.D	G50/125 OM2	G50/125 OM3	G62.5/125 OM1
<b>ZGGFR Safety</b>	1x2	2	192635	190787	-
<b>ZGGFR Safety</b>	1x4	4	187288	186363	190604
<b>ZGGFR Safety</b>	1x6	6	191867	186639	191851
<b>ZGGFR Safety</b>	1x8	8	on request	190621	on request
<b>ZGGFR Safety</b>	1x12	12	190719	187293	191796

## FO Universal wbGGFR Safety

Safety cables for indoor and outdoor applications

Metal-free, watertight along longitudinal axis, anti-rodent, flame-retardant

Compliant with IEC 60332.1 and IEC 60332.3 C, functional integrity for 30 minutes according to DIN 4102-12 (E30), "Functional integrity" in accordance with IEC 60331-25 FE 90 (90 minutes at 750 °C)



U-DQ(ZN)BH nxm	Fibres	Article No.	Article No.	Article No.	Article No.
Name	Number	E9/125 G.652.D	G50/125 OM2	G50/125 OM3	G62.5/125 OM1
<b>wbGGFR Safety</b>	2 x 12	24	190223	187294	187360
<b>wbGGFR Safety</b>	3 x 12	36	190224	on request	on request
<b>wbGGFR Safety</b>	4 x 12	48	190225	192119	on request
<b>wbGGFR Safety</b>	5 x 12	60	190226	on request	190605
<b>wbGGFR Safety</b>	6 x 12	72	-	-	191868

# CLAMP ASSIGNMENT

## Clamp assignment for single cable and multiple cable installation

The clamps listed refer to mean values (no guarantee)

Datwyler Keram (N)HXH FE180 / E30-E60		Datwyler clamp for single cable and multiple cable installation				
No. of cores x cross-section n x mm <sup>2</sup>	Type SAS single clamp single cable installation	maximum number of cables				
		up to 3 cables	up to 4 cables	up to 9 cables	up to 17 cables	from 18 cables
1 x 4 RE* (round, solid)	SAS 8 D** 1300956	SAS 14 D 1300020	SAS 18 D 1300022	SAS 22 D 1300024	SAS 28 D 1300027	SAS 38 DN 1300251
1 x 95 RM* (round, stranded)	SAS 18 D 1300022					
1 x 120 RM*	SAS 20 D 1300023					
1 x 150 RM*	SAS 22 D 1300024					
1 x 185 RM*	SAS 24 D 1300025					
1 x 240 RM*	SAS 30 D 1300028					
3 x 1,5 RE	SAS 12 D** 1300957	SAS 24 D 1300025	SAS 30 D 1300028	SAS 38 DN 1300251	SAS 47 DN 1300252	
3 x 2,5 RE	SAS 12 D** 1300957	SAS 24 D 1300025	SAS 30 D 1300028	SAS 38 DN 1300251	SAS 47 DN 1300252	
4 x 1,5 RE	SAS 12 D** 1300957	SAS 24 D 1300025	SAS 30 D 1300028	SAS 38 DN 1300251	SAS 47 DN 1300252	
4 x 2,5 RE	SAS 14 D** 1300958	SAS 26 D 1300026	SAS 38 DN 1300251	SAS 38 DN 1300251		
5 x 1,5 RE	SAS 14 D** 1300958	SAS 26 D 1300026	SAS 38 DN 1300251	SAS 38 DN 1300251		
5 x 2,5 RE	SAS 14 D** 1300958	SAS 28 D 1300027	SAS 38 DN 1300251	SAS 47 DN 1300252		
5 x 4 RE	SAS 16 D** 1300959	SAS 38 DN 1300251	SAS 38 DN 1300251	SAS 47 DN 1300252		
5 x 6 RE	SAS 18 D 1300022	SAS 38 DN 1300251	SAS 47 DN 1300252			
5 x 10 RE	SAS 20 D 1300023	SAS 47 DN 1300252				
5 x 16 RM	SAS 24 D 1300025					

\*) Bundeling in three-phase current installation / Single cable installation not permitted for alternating current

\*\*) pre-assembled with fire protection plug for concrete

## Clamp assignment for single cable and multiple cable installation

The clamps listed refer to mean values (no guarantee)

Type B...D strap clamp						
single cable installation	maximum number of cables					
	up to 3 cables	up to 4 cables	up to 9 cables	up to 17 cables	from 18 cables	
B 12 D 1300043	B 14 D 1300044	B 18 D 1300046	B 22 D 1300047	B 30 D 1300049	B 38 D 1300051	
B 18 D 1300046	B 38 D 1300051	B 46 D 1300053				
B 22 D 1300047	B 38 D 1300051	B 50 D 1300054				
B 22 D 1300047	B 46 D 1300053	B 54 D 1300055				
B 26 D 1300048	B 50 D 1300054	B 64 D 1300057				
B 30 D 1300049	B 54 D 1300055	B 70 D 1300058				
B 12 D 1300043	B 26 D 1300048	B 30 D 1300049	B 38 D 1300051	B 46 D 1300053	B 54 D 1300055	
B 12 D 1300043	B 26 D 1300048	B 30 D 1300049	B 38 D 1300051	B 38 D 1300051	B 54 D 1300055	
B 12 D 1300043	B 26 D 1300048	B 30 D 1300049	B 38 D 1300051	B 38 D 1300051	B 54 D 1300055	
B 14 D 1300044	B 26 D 1300048	B 34 D 1300050	B 38 D 1300051	B 46 D 1300053	B 54 D 1300055	
B 14 D 1300044	B 26 D 1300048	B 34 D 1300050	B 38 D 1300051	B 46 D 1300053	B 54 D 1300055	
B 14 D 1300044	B 30 D 1300049	B 38 D 1300051	B 46 D 1300053			
B 16 D 1300045	B 34 D 1300050	B 42 D 1300052	B 46 D 1300053			
B 18 D 1300046	B 34 D 1300050	B 46 D 1300053				
B 22 D 1300047	B 42 D 1300052					
B 26 D 1300048						

# CLAMP ASSIGNMENT

## Clamp assignment for single cable and multiple cable installation

The clamps listed refer to mean values (no guarantee)

Datwyler Keram (N)HXCH FE180 / E30-E60		Datwyler clamp for single cable and multiple cable installation				
No. of cores x cross-section n x mm <sup>2</sup>	Type SAS single clamp					
	single cable installation	maximum number of cables				
		up to 3 cables	up to 4 cables	up to 9 cables	up to 17 cables	
4 x 25 RM/16 (round, solid)	SAS 28 D 1300027					
4 x 35 RM/16 (round, stranded)	SAS 30 D 1300028					
4 x 50 RM/25	SAS 38 DN 1300251					
4 x 70 RM/35	SAS 47 DN 1300252					
4 x 95 RM/50						
4 x 120 RM/70						
4 x 150 RM/70						
4 x 185 RM/95						
4 x 240 RM/120						

## Clamp assignment for single cable and multiple cable installation

The clamps listed refer to mean values (no guarantee)

Type B...D strap clamp				
single cable installation	maximum number of cables			
	up to 3 cables	up to 4 cables	up to 9 cables	up to 17 cables
B 30 D 1300049				
B 30 D 1300049				
B 38 D 1300051				
B 46 D 1300053				
B 50 D 1300054				
B 54 D 1300055				
B 58 D 1300056				
B 64 D 1300057				
B 70 D 1300058				

1. Background Information

2. By Installation Type

3. By Cable Type

4. Product Range

5. Assembly Instructions

6. FAQ

# CLAMP ASSIGNMENT

## Clamp assignment for single cable and multiple cable installation

The clamps listed refer to mean values (no guarantee)

Datwyler Keram (N)HXH FE180 / E90		Datwyler clamp for single cable and multiple cable installation			
No. cores x cross-section n x mm <sup>2</sup>	Type SAS single clamp				
	single cable installation	maximum number of cables			
		up to 3 cables	up to 4 cables	up to 9 cables	up to 17 cables
1 x 16 RM*	SAS 10 D 1300018	SAS 20 D 1300023	SAS 26 D 1300026	SAS 30 D 1300028	SAS 38 DN 1300251
1 x 25 RM*	SAS 12 D** 1300957	SAS 24 D 1300025	SAS 30 D 1300028	SAS 38 DN 1300251	
1 x 35 RM*	SAS 14 D** 1300958	SAS 26 D 1300026	SAS 38 DN 1300251		
1 x 50 RM*	SAS 14 D** 1300958	SAS 28 D 1300027	SAS 38 DN 1300251		
1 x 70 RM*	SAS 16 D** 1300959				
1 x 95 RM*	SAS 20 D 1300023				
1 x 120 RM*	SAS 20 D 1300023				
1 x 150 RM*	SAS 22 D 1300024				
1 x 185 RM*	SAS 24 D 1300025				
1 x 240 RM*	SAS 30 D 1300028				
1 x 300 RM*	SAS 30 D 1300028				
3 x 1,5 RE	SAS 12 D** 1300957	SAS 24 D 1300025	SAS 30 D 1300028	SAS 38 DN 1300251	SAS 47 DN 1300252
3 x 2,5 RE	SAS 12 D** 1300957	SAS 24 D 1300025	SAS 30 D 1300028	SAS 38 DN 1300251	SAS 47 DN 1300252
4 x 1,5 RE	SAS 12 D** 1300957	SAS 24 D 1300025	SAS 30 D 1300028	SAS 38 DN 1300251	SAS 47 DN 1300252
4 x 2,5 RE	SAS 14 D** 1300958	SAS 26 D 1300026	SAS 38 DN 1300251	SAS 38 DN 1300251	
5 x 1,5 RE	SAS 14 D** 1300958	SAS 26 D 1300026	SAS 38 DN 1300251	SAS 38 DN 1300251	
5 x 2,5 RE	SAS 16 D** 1300959	SAS 30 D 1300028	SAS 38 DN 1300251	SAS 47 DN 1300252	
5 x 4 RE	SAS 16 D** 1300959	SAS 38 DN 1300251	SAS 38 DN 1300251	SAS 47 DN 1300252	
5 x 6 RE	SAS 18 D 1300022	SAS 38 DN 1300251	SAS 47 DN 1300252		
5 x 10 RE	SAS 20 D 1300023	SAS 38 DN 1300251			
5 x 16 RM	SAS 26 D 1300026				

\*) Bundeling in three-phase current installation / Single cable installation not permitted for alternating current

\*\*) pre-assembled with fire protection plug for concrete

## Clamp assignment for single cable and multiple cable installation

The clamps listed refer to mean values (no guarantee)

	Type B...D strap clamp			
	single cable installation	maximum number of cables		
		up to 3 cables	up to 4 cables	up to 9 cables
				up to 17 cables
	B 12 D 1300043	B 22 D 1300047	B 26 D 1300048	B 30 D 1300049
	B 12 D 1300043	B 26 D 1300048	B 30 D 1300049	B 38 D 1300051
	B 14 D 1300044	B 26 D 1300048	B 34 D 1300050	B 38 D 1300051
	B 14 D 1300044	B 30 D 1300049	B 38 D 1300051	
	B 16 D 1300045	B 34 D 1300050	B 38 D 1300051	
	B 22 D 1300047	B 38 D 1300051	B 50 D 1300054	
	B 22 D 1300047	B 42 D 1300052	B 50 D 1300054	
	B 22 D 1300047	B 46 D 1300053	B 54 D 1300055	
	B 26 D 1300048	B 50 D 1300054	B 64 D 1300057	
	B 30 D 1300049	B 54 D 1300055	B 70 D 1300058	
	B 30 D 1300049	B 64 D 1300057	B 76 D 1300059	
	B 12 D 1300043	B 26 D 1300048	B 30 D 1300049	B 38 D 1300051
	B 12 D 1300043	B 26 D 1300048	B 30 D 1300049	B 38 D 1300051
	B 12 D 1300043	B 26 D 1300048	B 30 D 1300049	B 38 D 1300051
	B 14 D 1300044	B 26 D 1300048	B 34 D 1300050	B 38 D 1300051
	B 14 D 1300044	B 26 D 1300048	B 34 D 1300050	B 38 D 1300051
	B 16 D 1300045	B 30 D 1300049	B 38 D 1300051	B 46 D 1300053
	B 16 D 1300045	B 34 D 1300050	B 38 D 1300051	B 46 D 1300053
	B 18 D 1300046	B 34 D 1300050	B 42 D 1300052	
	B 22 D 1300047	B 38 D 1300051		
	B 26 D 1300048			

# CLAMP ASSIGNMENT

## Clamp assignment for single cable and multiple cable installation

The clamps listed refer to mean values (no guarantee)

Datwyler Keram (N)HXCH FE180 / E90		Datwyler clamp for single cable and multiple cable installation			
No. of cores x cross-section n x mm <sup>2</sup>	Type SAS single clamp				
	single cable installation	maximum number of cables			
		up to 3 cables	up to 4 cables	up to 9 cables	up to 17 cables
4 x 25 RM/16	SAS 28 D 1300027				
4 x 35 RM/16	SAS 38 DN 1300251				
4 x 50 RM/25	SAS 38 DN 1300251				
4 x 70 RM/35	SAS 47 DN 1300252				
4 x 95 RM/50					
4 x 120 RM/70					
4 x 150 RM/70					
4 x 185 RM/95					
4 x 240 RM/120					

## Clamp assignment for single cable and multiple cable installation

The clamps listed refer to mean values (no guarantee)

Type B...D strap clamp					
	single cable installation	maximum number of cables			
		up to 3 cables	up to 4 cables	up to 9 cables	up to 17 cables
	B 30 D 1300049				
	B 34 D 1300050				
	B 38 D 1300051				
	B 46 D 1300053				
	B 50 D 1300054				
	B 54 D 1300055				
	B 58 D 1300056				
	B 64 D 1300057				
	B 70 D 1300058				

1. Background Information
2. By Installation Type
3. By Cable Type
4. Product Range
5. Assembly Instructions
6. FAQ

# CLAMP ASSIGNMENT

## Clamp assignment for single cable and multiple cable installation

The clamps listed refer to mean values (no guarantee)

Datwyler Keram JE-H(St)H...Bd Datwyler clamp for single cable and multiple cable installation  
FE 180 / E30-E90

No. of cores x cross-section n x 2 x mm	max. number	Type SAS single clamp					
		single cable installation	maximum number of cables				
			up to 3 cables	up to 4 cables	up to 9 cables	up to 17 cables	from 18 cables
2 x 2 x 0,8	44	SAS 6 D 1300016	SAS 12 D 1300019	SAS 14 D 1300020	SAS 20 D 1300023	SAS 26 D 1300026	SAS 38 DN 1300251
4 x 2 x 0,8	26	SAS 8 D* 1300956	SAS 16 D 1300021	SAS 22 D 1300024	SAS 26 D 1300026	SAS 38 DN 1300251	SAS 47 DN 1300251
8 x 2 x 0,8	11	SAS 14 D* 1300958	SAS 26 D 1300026	SAS 38 DN 1300251	SAS 47 DN 1300252	SAS 47 DN 1300252	
12 x 2 x 0,8	9	SAS 14 D* 1300958	SAS 28 D 1300027	SAS 38 DN 1300251	SAS 47 DN 1300252	SAS 47 DN 1300252	
16 x 2 x 0,8	7	SAS 16 D* 1300959	SAS 38 DN 1300251	SAS 38 DN 1300251	SAS 47 DN 1300252		
20 x 2 x 0,8	6	SAS 18 D 1300022	SAS 38 DN 1300251	SAS 47 DN 1300252	SAS 47 DN 1300252		
32 x 2 x 0,8	4	SAS 22 D 1300024	SAS 47 DN 1300252	SAS 55 DN 1300234			
40 x 2 x 0,8	3	SAS 26 D 1300026	SAS 55 DN 1300234				
52 x 2 x 0,8	1	SAS 28 D 1300027					

\*) pre-assembled with fire protection plug for concrete

## Clamp assignment for single cable and multiple cable installation

The clamps listed refer to mean values (no guarantee)

Type B...D strap clamp					
single cable installation	maximum number of cables				
	up to 3 cables	up to 4 cables	up to 9 cables	up to 17 cables	from 18 cables
B 12 D 1300043	B 12 D 1300043	B 14 D 1300044	B 22 D 1300047	B 26 D 1300048	B 38 D 1300051
B 12 D 1300043	B 16 D 1300045	B 22 D 1300047	B 26 D 1300048	B 38 D 1300051	B 46 D 1300053
B 14 D 1300044	B 26 D 1300048	B 38 D 1300051	B 46 D 1300053	B 46 D 1300053	
B 14 D 1300044	B 30 D 1300049	B 38 D 1300051	B 46 D 1300053	B 46 D 1300053	
B 16 D 1300045	B 34 D 1300050	B 38 D 1300051	B 46 D 1300053		
B 18 D 1300046	B 38 D 1300051	B 46 D 1300053	B 46 D 1300053		
B 22 D 1300047	B 46 D 1300053	B 54 D 1300055			
B 26 D 1300048	B 54 D 1300055				
B 30 D 1300049					

# CLAMPS

## Single clamp E30-E90 - type SAS



Fixing distance  $\leq 1200 / 600 \text{ mm}^{1)}$   
also for cable bundles

<sup>1)</sup> Depending on type of cable

Article No.	Name	Clamp type	Cable Ø [mm]	Information	PU
-------------	------	------------	--------------	-------------	----

### Type SAS single clamp, fixing distance $\leq 600 \text{ mm}$

1300016	Single clamp	SAS 6 D	5 - 6		100 pcs.
1300017	Single clamp	SAS 8 D	7 - 8		100 pcs.
1300018	Single clamp	SAS 10 D	9 - 10		100 pcs.
1300019	Single clamp	SAS 12 D	11 - 12		100 pcs.
1300020	Single clamp	SAS 14 D	13 - 14		100 pcs.
1300021	Single clamp	SAS 16 D	15 - 16		100 pcs.
1300022	Single clamp	SAS 18 D	17 - 18		100 pcs.
1300023	Single clamp	SAS 20 D	19 - 20		100 pcs.
1300024	Single clamp	SAS 22 D	21 - 22		100 pcs.
1300025	Single clamp	SAS 24 D	23 - 24		100 pcs.
1300026	Single clamp	SAS 26 D	25 - 26		100 pcs.
1300027	Single clamp	SAS 28 D	27 - 28		100 pcs.
1300028	Single clamp	SAS 30 D	29 - 30		100 pcs.
1300251	Single clamp	SAS 38 DN	29 - 38		25 pcs.
1300252	Single clamp	SAS 47 DN	38 - 47		20 pcs.
1300234	Single clamp	SAS 55 DN	47 - 55		20 pcs.
1300250	Single clamp	SAS 60 DN	55 - 60		20 pcs.

### Type SAS V4A single clamp, material 1.4571 (fastened using KDM stainless steel plugs, available on request)

	Single clamp	SAS 19 D V4A	15 - 19		50 pcs.
	Single clamp	SAS 24 D V4A	19 - 24		50 pcs.
	Single clamp	SAS 29 D V4A	24 - 29		50 pcs.
	Single clamp	SAS 38 D V4A	29 - 38		25 pcs.
	Single clamp	SAS 47 D V4A	38 - 47		20 pcs.
	Single clamp	SAS 55 D V4A	47 - 55		20 pcs.
	Single clamp	SAS 63 D V4A	55 - 63		20 pcs.

## Type SAS single clamp E30-E90, pre-assembled with type K6x5 fire protection plugs



Fixing distance  $\leq 1200 / 600 \text{ mm}^{1)}$   
also for cable bundles

<sup>1)</sup> Depending on type of cable

Article No.	Name	Clamp type	Cable Ø [mm]	Information	PU
-------------	------	------------	--------------	-------------	----

### Type SAS single clamp, pre-assembled with fire protection plugs (type K6x5, 30 mm)

1300956	Single clamp	SAS 8 D - K6x5	7 - 8	pre-assembled with type K6x5, 30 mm	100 pcs.
1300957	Single clamp	SAS 12 D - K6x5	11 - 12	pre-assembled with type K6x5, 30 mm	100 pcs.
1300958	Single clamp	SAS 14 D - K6x5	13 - 14	pre-assembled with type K6x5, 30 mm	100 pcs.
1300959	Single clamp	SAS 16 D - K6x5	15 - 16	pre-assembled with type K6x5, 30 mm	100 pcs.

## Strap clamp E30-E90 - type B without trough

Fixing distance  $\leq 1200 / 800 / 600$  mm <sup>1)</sup>  
also for cable bundles

<sup>1)</sup> Depending on type of cable



Article No.	Name	Clamp type	Cable Ø [mm]	Information	PU
1300064	C-shaped rail	2970 / 25LD / 2 m		Slit width 16 mm	1 pc. = 2 m
1300043	Strap clamp	B 12 D	6 - 12		100 pcs.
1300044	Strap clamp	B 14 D	10 - 14		100 pcs.
1300045	Strap clamp	B 16 D	12 - 16		100 pcs.
1300046	Strap clamp	B 18 D	14 - 18		100 pcs.
1300047	Strap clamp	B 22 D	18 - 22		100 pcs.
1300048	Strap clamp	B 26 D	22 - 26		100 pcs.
1300049	Strap clamp	B 30 D	26 - 30		100 pcs.
1300050	Strap clamp	B 34 D	30 - 34		100 pcs.
1300051	Strap clamp	B 38 D	34 - 38		100 pcs.
1300052	Strap clamp	B 42 D	38 - 42		100 pcs.
1300053	Strap clamp	B 46 D	42 - 46		100 pcs.
1300054	Strap clamp	B 50 D	46 - 50		50 pcs.
1300055	Strap clamp	B 54 D	50 - 54		50 pcs.
1300056	Strap clamp	B 58 D	54 - 58		50 pcs.
1300057	Strap clamp	B 64 D	58 - 64		50 pcs.
1300058	Strap clamp	B 70 D	64 - 70		50 pcs.
1300059	Strap clamp	B 76 D	70 - 76		50 pcs.
1300060	Strap clamp	B 82 D	76 - 82		50 pcs.
1300061	Strap clamp	B 90 D	82 - 90		50 pcs.
1300062	Strap clamp	B 100 D	90 - 100		25 pcs.
1300063	Strap clamp	B 110 D	100 - 110		25 pcs.

# TROUGHS / MULTI-CABLE SUPPORTS

## Trough E30-E90



Type B strap clamp with trough

For laying several cables independently or in bundles in parallel on ceilings and walls. System circuit integrity is achieved for Datwyler Keram cable types  
(N)HXH/(N)HXH CL/(N)HXCH FE180/E30-E60,  
(N)HXH/(N)HXCH FE180/E90, JE-H(St)H FE180/E30-E90 and JE-H(St)HRH FE180/E30-E90.

Article No.	Name	Clamp type	Cable Ø [mm]	Information	PU
1300065	Trough	LW 16 D	8 - 13		100 pcs.
1300066	Trough	LW 22 D	13 - 19		100 pcs.
1300067	Trough	LW 26 D	19 - 23		100 pcs.
1300068	Trough	LW 34 D	23 - 31		100 pcs.
1300069	Trough	LW 38 D	31 - 36		100 pcs.
1300070	Trough	LW 42 D	36 - 40		100 pcs.
1300071	Trough	LW 46 D	40 - 43		100 pcs.
1300072	Trough	LW 50 D	43 - 47		50 pcs.
1300073	Trough	LW 54 D	47 - 51		50 pcs.

## Multi cable support E30-E90 - Type Hermann clamp

for wall and ceiling installation

Fixing distances  $\leq 800$  mm/ $\leq 600$  mm\*



Multi cable support E30-E90  
Type Hermann clamp



Multi cable support E30-E90  
Type Hermann clamp S (small)

For laying multiple cables on ceilings or walls. System circuit integrity is achieved for Datwyler Keram cable types  
(N)HXH/(N)HXH CL/(N)HXCH FE180/E30-E60,  
(N)HXH/(N)HXCH FE180/E90,  
JE-H(St)H FE180/E30-E90 and  
JE-H(St)HRH FE180/E30-E90.

Article No.	Name	Information	PU
3800206	Hermann clamp	for wall and ceiling installation	incl. KDM plug 10 pcs.
3800207	Hermann clamp	for wall and ceiling installation	incl. KDM plug 50 pcs.
3800208	Hermann clamp	for wall and ceiling installation	incl. KDM plug 100 pcs.
1300346	Hermann clamp	for wall and ceiling installation	in wire-mesh box w/o plugs 750 pcs.
3800199	Hermann clamp S	for wall and ceiling installation	incl. KDM plug 10 pcs.
3800200	Hermann clamp S	for wall and ceiling installation	incl. KDM plug 50 pcs.
3800201	Hermann clamp S	for wall and ceiling installation	incl. KDM plug 100 pcs.
1301279	Hermann clamp S	for wall and ceiling installations	in wire-mesh box w/o plugs 1750 pcs.

<sup>1)</sup> Depending on type of cable

## E0 multi-cable support for wall and ceiling installation in accordance with MLAR 11/2005



Article No.	Name	Interior dimensions mm x mm x mm	Exterior dimensions mm x mm x mm	PU
3800086	E0 multi-cable support	approx. 80 x 45 x 33	~ 87 x 60 x 33	25 pcs.
3800087	E0 S multi-cable support	approx. 55 x 35 x 33	~ 63 x 45 x 33	50 pcs.

To speed up installation times for the E0 multi-cable support, we recommend using the Datwyler SWM-SM 50 setting tool.

### System description:

For fire-safe installation of multiple cables or lines along ceilings or walls above fireproof ceilings in accordance with MLAR 11/2005 (not for functional integrity!)

### Excerpt from MLAR 11/2005 3.5.3.:

The special requirements pertaining to fireproof fasteners for lines installed in the area between floor slabs and suspended ceilings must be observed.

Installation spacing (cm)	30	40	50	60	70	80
Cable weight (kg/m)	6	4,5	3,6	3	2,6	2,3

## Cable joint E30-E90

For connecting two Datwyler Keram cable types: (N)HXH/(N)HXH CL/(N)HXCH FE180/E30-E60 and (N)HXH/(N)HXCH FE180/E90. The cable joint provides the relevant circuit integrity of the cables.



Article No.	Name	Dimensions [n x mm <sup>2</sup> ]	PU
1300310	Cable joint SMH4	4 x 1,5 - 4 x 4	1 pc.
1300311	Cable joint SMH4	4 x 6 - 4 x 10	1 pc.
1300312	Cable joint SMH4	4 x 16 - 4 x 25	1 pc.
1300313	Cable joint SMH4	4 x 35 - 4 x 50	1 pc.
1300314	Cable joint SMH4	4 x 70 - 4 x 95	1 pc.
1300315	Cable joint SMH4	4 x 120 - 4 x 150	1 pc.
1300316	Cable joint SMH4	4 x 185 - 4 x 240	1 pc.
1300317	Cable joint SMHC4	4 x 1,5/1,5 - 4 x 4/4	1 pc.
1300318	Cable joint SMHC4	4 x 6/6 - 4 x 10/10	1 pc.
1300319	Cable joint SMHC4	4 x 16/16 - 4 x 25/16	1 pc.
1300320	Cable joint SMHC4	4 x 35/16 - 4 x 50/25	1 pc.
1300321	Cable joint SMHC4	4 x 70/35 - 4 x 95/50	1 pc.
1300322	Cable joint SMHC4	4 x 120/70 - 4 x 150/70	1 pc.
1300323	Cable joint SMHC4	4 x 185/95 - 4 x 240/120	1 pc.

# CONNECTION BOX / TERMINAL BOX

## Connection box / terminal box E30-E90



VAD2 E30 - E90



Fuse element 2A

Article No.	Name	Exterior dimensions [mm]	PU
301372	VAD 5x6 E30-E90	100 x 100 x 50	1 pc.
301373	VAD 3x10 E30-E90	100 x 100 x 50	1 pc.
301381	VAD 8x6 E30-E90	165 x 165 x 50	1 pc.
660302	Fuse element 2A for VAD2	40 x 20 x 20	1 pc.

## High-current distribution box, type Hercules, E30-E90



Hercules distribution box  
E30-E90



Hercules cover  
AHD E30-E90

Article No.	Type	Interior dimensions [mm]	Information	PU
301382	AHD 263013 E90	260 x 300 x 130	(empty, without base)	1 set
301375	HS 263013 E30-E90	260 x 300 x 130	with top hat rail 35 x 75 mm 1-row	1 set
301376	HS 353013 E30-E90	350 x 300 x 130	with top hat rail 35 x 75 mm 2-rows	1 set
301377	HS 523013 E30-E90	520 x 300 x 130	with top hat rail 35 x 75 mm 3-rows	1 set
301378	HI 263013 E30-E90	260 x 300 x 130	with QSA trough for 6 strips	1 set
301379	HI 353013 E30-E90	350 x 300 x 130	with QSA trough for 11 strips	1 set
301380	HI 523013 E30-E90	520 x 300 x 130	with QSA trough for 13 strips	1 set

### Replacement firestop mastic (if the provided firestop mastic is not sufficient)

1300467	SP cartridge	Firestop mastic 310 ml	400 g cartridge
---------	--------------	------------------------	-----------------

# CONCRETE PLUGS

## Fire protection plugs



K 6x5  
30 mm embedment depth



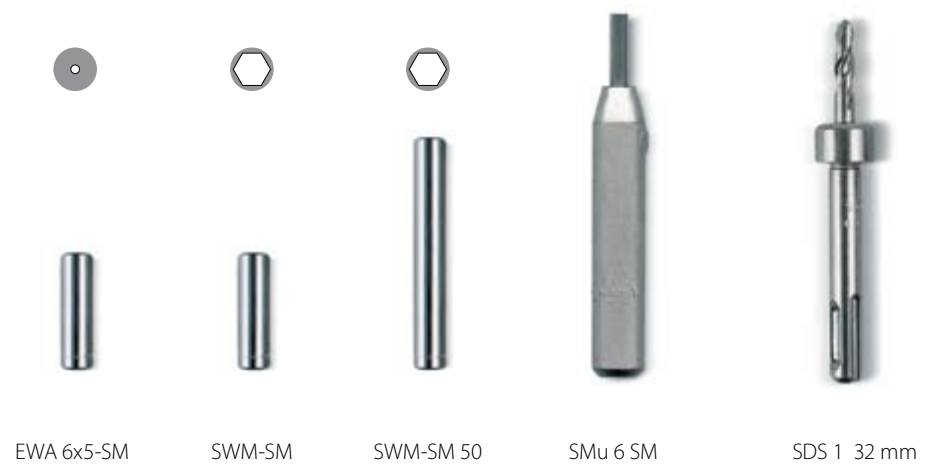
K 6x110  
K 6x80



KDM  
30 mm embedment depth

Article No.	Name	Information / fastening of	PU
1300953	Plug set K6x5	SAS single clamps	200 plugs & drill bit
1300954	Plug set KDM	Single/distance clamps and Hermann clamp	200 plugs & drill bit
1300954	Plug set KDM	C-shaped rail	200 plugs & drill bit
301369	Plugs K6x80	On insulated ceilings and walls up to 75 mm	100 pcs.
1300448	Plugs K6x110/50	On insulated ceilings and walls up to 105 mm	100 pcs.

Fire protection plugs - accessories



Article No.	Name	Information / fastening of	PU
1300962	SDS 1 drill bit	Required for type K6x5 plug and KDM	1 pc.
1300961	SWM-SM setting tool	Required for KDM plug (drill hammer)	1 pc.
1300963	SMu 6 SM setting tool	Required for "pre-assembled clamp" (drill hammer)	1 pc.
1300860	SWM-SM 50 setting tool	Required for Hermann clamp (drill hammer) and C-shaped rail	1 pc.
1300462	EWA 6x5-SM setting tool	For direct mounting of type K6x5 plug	1 pc.
1300560	EWA 6x80-SM setting tool	For direct mounting of type K6x80 plug	1 pc.
1300851	EWA 6x110-SM setting tool	For direct mounting of type K6x110 plug	1 pc.

# SPECIAL PLUGS / IDENTIFICATION SIGNS

## Special plugs and accessories



MMS-P 7.5/45 40 mm embed- ment depth	MMS-St 6/60 40 mm embed- ment depth	HMS 5/40 30 mm embed- ment depth	Gas concrete plugs PBD M 6x10	Identification sign
--	---	--	----------------------------------	---------------------

Article No.	Name	Information / fastening of	PU
<b>Gas concrete plugs</b>			
1301301	PBD M6x10 plug	Gas concrete plugs for spacer clamps, profile rail, Hermann clamp, light cable support	25 pcs.
1301306	PBD M10x10 plug	Gas concrete plugs for heavy cable support	25 pcs.

### Accessories

1301314	EWP 10x10 SDS setting tool	Required for PBD 10x10 plug (drill hammer)	
---------	----------------------------	--	--

### Mounting screws

1301218	Mounting screws HMS 5/40	For SAS single clamps	200 pcs.
3800097	Mounting screws MMS-St 6/60	For SAS single clamps	100 pcs.
1300461	Mounting screws MMS-P 7.5/45	For C-shaped rail 2970/2 SLD, Hermann clamps	100 pcs.

### Identification sign

1300479	Identification sign	For cable system	10 pcs.
---------	---------------------	------------------	---------

## Insulation bridging set (Ü-Set)



Article No.	Name	Information / fastening of	PU
	Ü-Set 160 mm Bridging set up to 165 mm insulation	100 sets = 100 mounting screws, 100 joints, 300 nuts, 17 threaded rods, type M6 1m (34 x 0.5 m)	100 sets
	Ü-Set 245 mm Bridging set up to 245 mm insulation	100 sets = 100 proved mounting screws, 100 joints, 300 nuts, 25 threaded rods, type M6 1m (50 x 0.5 m)	100 sets
	Ü-Set 400 mm Bridging set up to 400 mm insulation	100 sets = 100 proved mounting screws, 100 joints, 300 nuts, 50 threaded rods, type M6 1m (100 x 0.5m)	100 sets

WUM - support measure for vertical cable installation

Effective support measure for vertical installation of safety cables with intrinsic fire resistance using the C-shaped rail 2970 SLD. Meandering cable laying is not necessary if the WUM is used (intervals: up to 3.5 m).



Article No.	Name	Exterior dimensions	for C-shaped rail 2970 SLD (width)
1301276	WUM 300 E30	100 x 370 x 135 mm	300 mm
1301278	WUM 400 E30	100 x 470 x 135 mm	400 mm
1301277	WUM 500 E30	100 x 570 x 135 mm	500 mm
1301275	WUM 300 E90	200 x 470 x 185 mm	300 mm
1301274	WUM 400 E90	200 x 570 x 185 mm	400 mm
1301273	WUM 500 E90	200 x 670 x 185 mm	500 mm
<b>Replacement firestop mastic (if the provided firestop mastic is not sufficient)</b>			
1300467	SP cartridge	Firestop mastic 310 ml	400 g cartridge

1. Background Information
2. By Installation Type
3. By Cable Type
4. Product Range
5. Assembly Instructions
6. FAQ

# SAS

## Assembly instructions

### SAS single clamp



The **K6x5** plugs can be used to fasten Datwyler SAS clamps to concrete.

Tools: drill hammer, SDS 1 drill bit, SMu 6 SM setting tool.

The **HMS 5/40 installation bolts** can be used to fasten the Datwyler SAS clamps to concrete, sand-lime bricks and solid bricks.

Tools: Drill with 4 mm concrete / masonry drill bit and power screwdriver with T-Drive "T20"



#### Using HMS 5/40 installation bolts

Insert the installation bolt into the clip.

The shape of the bolt head prevents it from pressing against the cable in the clamp.

(for clamp sizes SAS8 and larger)



#### Using K6x5 plugs

By using drill bit SDS1, the hole for K6x5 plugs is drilled to an exact depth of 32 mm. To achieve this depth, drill the hole as far as it will go.

(also refer to assembly instructions for K6x5 plug on page 90)

#### Using HMS 5/40 installation bolts

Hole diameter is 4.0 mm. The hole depth is at least 40 mm.

(also refer to assembly instructions for installation bolt on page 96)

**Blow out the drilled holes with compressed air to clean them.**



### Using K6x5 plugs

The SMu 6 SM setting tool is required for the installation. The K6x5 plug is screwed into the SAS clamp prior to the installation. Make sure that the plug bolts do not protrude into the cable area. Insert the clamp with the bolted plug into the drilled hole. Place the setting tool onto the SDS 1 drill bit. Use the drill hammer to drive the plug deeper into the drilled hole and splay it apart.  
(also refer to assembly instructions for K6x5 plug on page 90)

### Using HMS 5/40 installation bolts

Insert using T-drive "T20".  
(also refer to assembly instructions for HMS installation bolts on page 96)



Depending on the cable type, a fastener spacing of up to 1.200 mm is required to maintain the functional integrity of the SAS clamps.

#### DIN VDE 0100-520 522.6.:

Cable and line systems must be chosen and installed in such a manner to minimise any physical damage (such as impact, penetration or pressure) that occurs during installation, operation and maintenance.

#### DIN VDE 0276 - 604 5.5 Cable fasteners:

Reference value for clamp spacing with non-armoured cables: 20 times the cable diameter. The spacing should not exceed 80 cm horizontally and 1.5 m vertically.



The cable system must be fitted with a permanent identification sign.

# STRAP CLAMP

## Assembly instructions

### C-rail for strap clamp



The **KDM plugs** can be used to fasten Datwyler 2870/2 SLD C-rails to concrete.

Tools: drill hammer, SDS 1 drill bit, SWM-SM or SWM-SM 50 setting tool

The **MMS-P 7.5/45 installation bolts** can be used to fasten Datwyler 2870/2 SLD C-rails to concrete, sand-lime bricks and solid bricks.

Tools: Drill with 6 mm concrete / masonry drill bit and power screwdriver with T-Drive "T40"

#### Fastening points for SL2870/2 SLD C-rail.

The required number of fastening points also depends on the load to be fastened and the extraction force of the plug type. A hole spacing of maximum 250 mm is required to maintain functional integrity.

No functional integrity cables may be fastened outside of the plug groups!



Depending on the cable type, a fastener spacing of up to 1200 mm is required to maintain the functional integrity of the strap clamps.



#### Using KDM plugs

By using drill bit SDS1, the hole for KDM plugs is drilled to an exact embedment depth of 32 mm.

To achieve this depth, drill the hole as far as it will go. (also refer to assembly instructions for KDM plug on page 91)

#### Using MMS-P 7.5/45 installation bolts

Hole diameter is 6.0 mm. The minimum hole depth is 55 mm. (also refer to assembly instructions for MMS plug on page 93)

**Blow out the drilled holes with compressed air to clean them.**

# STRAP CLAMP

## Assembly instructions



### Using KDM plugs

The SWM-SM or SWM-SM 50\* setting tool is required for the installation. Insert the KDM plug through the rail into the drilled hole. Do not remove the pre-assembled nut and washer! Place the setting tool onto the SDS 1 drill bit. Use the drill hammer to drive the plug deeper into the drilled hole and splay it apart.  
(also refer to assembly instructions for KDM plug on page 91)

\* also suitable for fastening Datwyler Hermann clamp



### Using MMS-P 7.5/45 installation bolts

Screw in using T-drive "40".  
(also refer to assembly instructions for MMS plug on page 93)



The cable system must be fitted with a permanent identification sign.



For horizontally fastened cables, the clamps must be secured against slippage in case of fire (using a sliding nut, for example).

### DIN VDE 0100-520 522.6.:

Cable and line systems must be chosen and installed in such a manner to minimise any physical damage (such as impact, penetration or pressure) that occurs during installation, operation and maintenance.

### DIN VDE 0276 - 604 5.5 Cable fasteners:

Reference value for clamp spacing with non-armoured cables: 20 times the cable diameter.  
The spacing should not exceed 80 cm horizontally and 1.5 m vertically.

# MULTI-CABLE SUPPORT

## Assembly instructions

### Type Hermann clamp / Hermann clamp S



The **KDM plug** can be used to fasten "Hermann" clamps to concrete.

Tools: drill hammer, SDS 1 drill bit, SWM-SM 50 setting tool

The **MMS-P 7.5/45 installation bolts** can be used to fasten "Hermann" clamps to concrete, sand-lime bricks and solid bricks.

Tools: Drill with 6 mm concrete / masonry drill bit, power screwdriver with T-Drive "T40" and drill bit extension of at least 110 mm for ceiling installations



The universal "Hermann" clamp can be installed on walls or ceilings.

The cover is always situated on the side and the rounded cable support surface always faces downwards.

An assembly opening is provided on the clip to allow for ceiling installations.



#### Using KDM plugs

By using drill bit SDS1, the hole for KDM plugs is drilled to an exact embedment depth of 32 mm. To achieve this depth, drill the hole as far as it will go.

(also refer to assembly instructions for KDM plug on page 90)

#### Using MMS-P 7.5/45 installation bolts

Hole diameter is 6.0 mm. The minimum hole depth is 55 mm. (also refer to assembly instructions for HMS installation bolts MMS on page 93)

**Blow out the holes with compressed air to clean them.**



#### Using KDM plugs

The SWM 50 SM setting tool is required for the installation.

Insert the KDM plug through the fastening hole into the drilled hole.

Do **not** remove the pre-assembled nut and washer!

Place the setting tool onto the SDS 1 drill bit.

Use the drill hammer to drive the plug deeper into the hole and splay it apart.

(also refer to assembly instructions for KDM plugs on page 90)

#### Using MMS-P 7.5/45 installation bolts

Screw in using T-drive "40"

(also refer to assembly instructions for MMS on page 93)

# MULTI-CABLE SUPPORT

## Assembly instructions



Cables can be easily inserted through the large opening into the Hermann clamp.  
Make sure to install cables with higher weight below those of lower weight.



After installing the cable, close the Hermann clamp using the integrated folding mechanism.  
Cables can be easily re-inserted into the clip at any time.  
Depending on the cable type, a fastener spacing of up to 800 mm is required to maintain the functional integrity of the strap clamps.



The cable system must be fitted with a permanent identification sign.



### The “Hermann” clamp:

- Unsurpassed performance
- Enormous savings: minimum of material and time expenditures
- Does not require anti-slippage elements

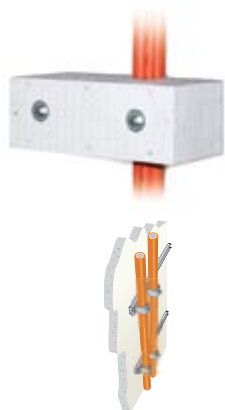
#### Furthermore:

When installing a Hermann clamp in accordance with MLAR 03/2000 for “cables without functional integrity” above a fireproof ceiling, it is possible to install a linear cable weight of 15 kg/m with a dip spacing of 600 mm.

# WUM

## Assembly instructions

### WUM - support measure



#### Application

Effective support measure in accordance with DIN 4102-12 for vertical installation of safety cables with integrated functional integrity onto 2970 SLD profile rails.

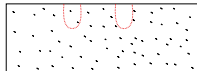
A meander-shaped cable line can be avoided when installing WUM at a spacing of up to 3.5 m.

Riser lines consisting of Datwyler 2970/2 SLD C-rails must be fastened to walls using Datwyler fireproof plugs in accordance with the General Appraisal Certificates (ABPs) from building authorities.

Datwyler safety cables with integrated functional integrity are fastened onto walls using Datwyler type B...D strap clamps onto Datwyler 2970/2 SLD C-rails.



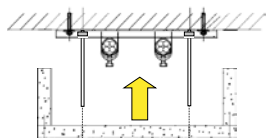
The threaded bolts are fastened using sliding nuts onto Datwyler 2970/2 SLD C-rails. Use the same spacing as the holes provided on the WUM. **(There is only one fastening point for WUM 300 located in the centre)**



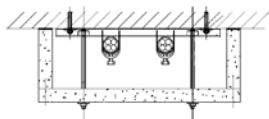
Cut cable feedthroughs into the WUM...



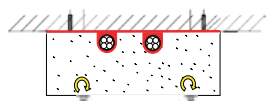
... and fill the inside with mineral wool.



Push the WUM onto the threaded bolts...



... and fasten it there using a nut and washer tightened by about 2 turns.



The cable inlets are sealed using mineral wool and Datwyler S100 SM-K firestop mastic. The gap between the WUM and the wall is also filled with S100 SM-K firestop mastic.

# E0 MULTI-CABLE SUPPORT

Assembly instructions

## Assembly instructions for E0 multi-cable supports

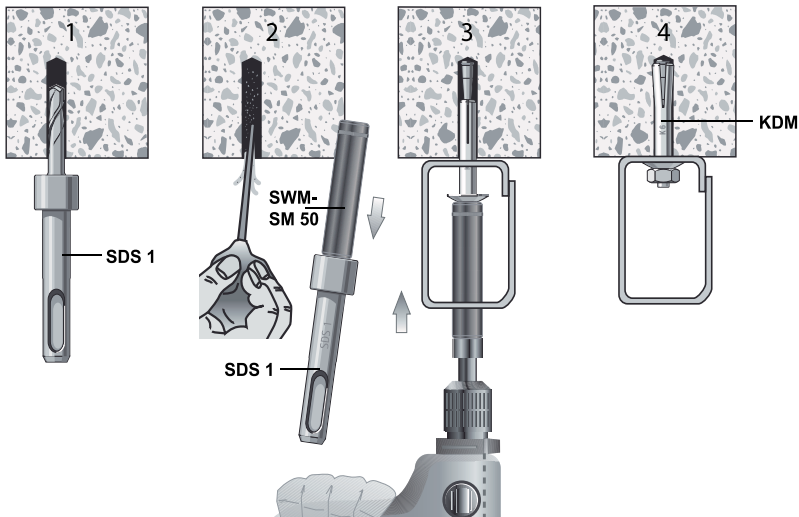


The KDM plug can be used to fasten Datwyler E0 multi-cable supports to concrete.

Tools: Drill hammer, SDS 1 drill bit, SWM-SM 50 setting tool. The MMS-P 7.5/45 installation bolts can be used to fasten the Datwyler E0 multi-cable supports to concrete, sand-lime bricks and solid bricks.

Tools: Drill with 6 mm concrete / masonry drill bit, power screwdriver with T-Drive "T40" and drill bit extension of at least 110 mm for ceiling installations.

The universal E0 multi-cable support can be installed on walls or ceilings. The cover is always situated on the side at the top. For ceiling installation, an assembly opening is situated on the bottom to provide access for the assembly tools.



### Using KDM plugs

By using drill bit SDS1, the hole for KDM plugs is drilled to an exact seat depth of 32 mm.

To achieve this depth, drill the hole as far as it will go (also refer to assembly instructions for KDM plug).

Blow out the drilled holes with compressed air to clean them.

The SWM 50 SM setting tool is required for the installation.

The KDM plugs are inserted through the fastening hole into the drilled hole.

Do not remove the pre-assembled nut and washer!

Place the setting tool onto the SDS 1 drill bit.

Use the drill hammer to drive the plug deeper into the drilled hole and splay it apart.

# E0 MULTI-CABLE SUPPORT

## Assembly instructions

### Assembly instructions for multi-cable supports

#### Using MMS-P 7.5/45 installation bolts

Drill bit diameter is 6 mm, drill hole depth is > 55 mm, tighten bolts using T-Drive "40" (also refer to assembly instructions for installation bolt MMS).

Blow out the drilled holes with compressed air to clean them.

Cables can be easily inserted through the large opening into the E0 multi-cable support.

E0 multi-cable supports can hold, for example, 30 NYM 3 x 1.5 mm<sup>2</sup> cables.

E0 multi-cable support of type "S" can hold, for example, 15 NYM 3 x 1.5 mm<sup>2</sup> cables.

This clip is only intended for compliance with the special requirements with respect to fireproof fasteners above suspended ceilings in accordance with MLAR 11/2005 section 3.5.3 and does not fulfil the functional integrity requirements given in section 5.2.1.

Close the E0 multi-cable support after the cables were installed.

Cables can be easily re-inserted into the clip at any time.

The load on E0 clips in cases of fire depends on the fastener spacing.

Installation spacing (cm)	30	40	50	60	70	80
Cable weight (kg/m)	6	4.5	3.6	3	2.6	2.3

(Not for functional integrity!)

For higher load requirements, the Datwyler Hermann clamp can be used.  
(for assembly instructions, see page 80)

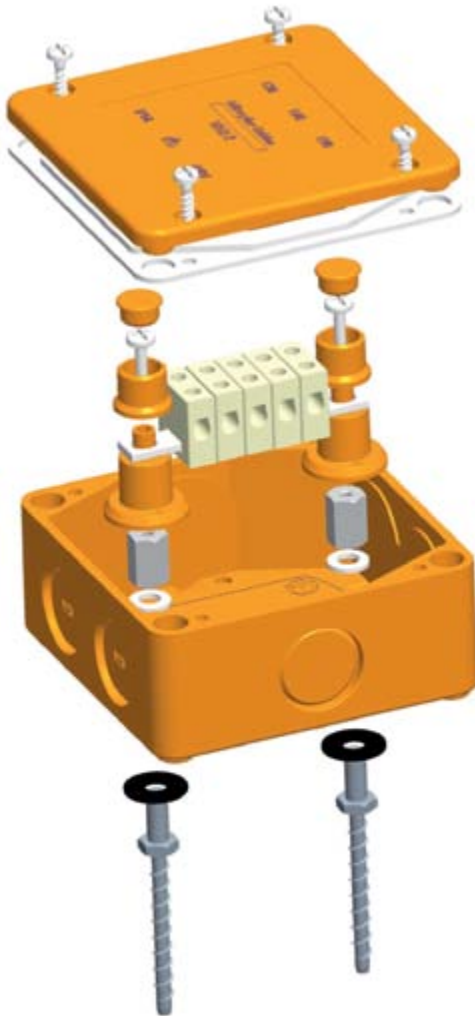
Installation spacing (cm)	60	80
Cable weight (kg/m)	15	11.25

(Not for functional integrity!)

# VAD SOCKET

## Assembly instructions

### Assembly instructions for VAD socket E30-E90



Drill bit diameter is 5 mm  
Embedment depth is > 45 mm  
Blow out the drilled holes  
with compressed air to clean them.

Screw in the mounting screws and  
insert the sealing plugs  
(must be detached from the cover  
gasket).

Place the socket and assemble the single  
parts as shown on the left.

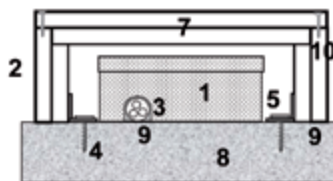
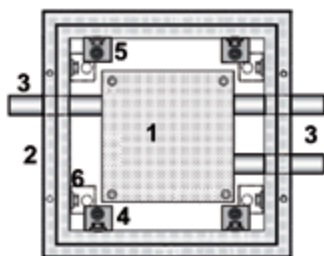
Cables are fed through pre-punched  
openings by using the supplied tool.

The mounting screws are certified  
for concrete, full bricks, masonry,  
perforated sand lime bricks and  
solid sand lime bricks.

# HERCULES COVER

## Assembly instructions

### Cable connections using AHD E30-E90 Hercules cover



- |   |                            |    |                 |
|---|----------------------------|----|-----------------|
| 1 | Junction box               | 6  | Anchor bolt     |
| 2 | AHD E30-E90 Hercules cover | 7  | Lid             |
| 3 | Cable inlet                | 8  | Wall            |
| 4 | Anchor screws              | 9  | Firestop mastic |
| 5 | Fastening bracket          | 10 | Lid bolt        |

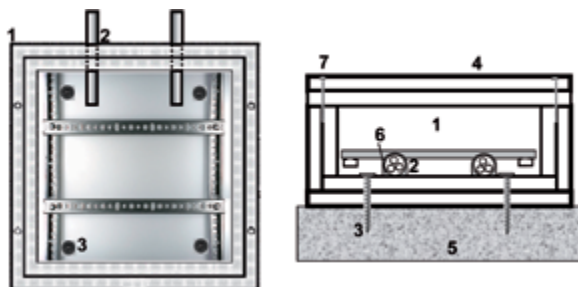
1. Cable connections or junctions can be installed using a conventional junction box (1) made of poly-carbonate and terminals made of polyamide 6.6.
2. Cut openings into the bottom of the AHD E30-E90 Hercules cover (2) for the cable inlets (3).
3. Drill the plug holes for the fasteners (4).
4. Fasten the 4 brackets (5) to the intended anchor bolts (6), depending on your space requirements
5. Clean the assembly surface, remove the lid from the AHD E30-E90 Hercules cover (7) and fasten the enclosure using the correct anchor screws (4) until there is a gap of approx. 5 mm between the enclosure (2) and wall (8). Fill this gap and the cable inlets using S 100 SM-K firestop mastic (9). Next, tighten the enclosure into place using the anchor screws (4). Scrape away or smoothen any protruding fire-stop mastic (can be washed away or thinned using water during the workability period).
6. Close the lid on the AHD E30-E90 Hercules cover (7) using the correct lid bolts (10). (Do not seal the cover using firestop mastic!)

Note: The spacing between the side walls of the AHD E30-E90 Hercules cover and the junction boxes must be at least 35 mm and 10 mm between the lids.

# HERCULES TERMINAL BOX

Assembly instructions

## Cable connections using AHD E30-E90 Hercules terminal box



- |   |                                   |   |                 |
|---|-----------------------------------|---|-----------------|
| 1 | AHD E30-E90 Hercules terminal box | 5 | Wall            |
| 2 | Cable inlet                       | 6 | Firestop mastic |
| 3 | Anchor screws                     | 7 | Lid screw       |
| 4 | Lid                               |   |                 |

1. Drill the plug holes for the anchor screws (3).
2. Clean the mounting surface, remove the lid from the AHD E30-E90 Hercules terminal box (4) and fasten the enclosure using the corresponding anchor screws (4).
3. Drill cable inlets into the enclosure large enough for the diameters of the cables.
4. After inserting the cables, generously fill the gap using S 100 SM-K fire-stop mastic (6) with enough material to cover the entire thickness of the enclosure walls. Scrape away or smoothen any protruding firestop mastic (can be washed away or thinned using water during the workability period).
5. Fit conventional terminals or LSA+ onto the standard support rail and connect the wires.
6. Check that the cable inlets (2) are sufficiently sealed using fire-stop mastic (6) and add more if necessary.
7. Close the lid on the AHD E30-E90 Hercules terminal box (4) using the correct lid bolts (7). (Do not seal the cover using firestop mastic!)

# ASSORTED PLUGS

## Basic information on plugs



Fastening surface: concrete  $\geq$  B25

	Plug type	Drill bit	Setting tool	Load (kN) F90	
Application area				Central tension	Tranverse load
Single clamp SAS	K6x5	SDS 1	EWA6x5 SM	0.3	0.3
Single clamp SAS pre-assembled	SAS...D-K6x5	SDS 1	SMu 6 SM	0.3	0.3
Tunnel clamp TSD	KDM	SDS 1	SWM-SM	0.3	0.3
C-rail	KDM	SDS 1	SWM-SM	0.3	0.3
Protective cable duct	KDM	SDS 1	SWM-SM	0.3	0.3
G-duct	KDM	SDS 1	SWM-SM	0.3	0.3
Cable rails, light	KDM	SDS 1	SWM-SM	0.3	0.3
Hermann clamp	KDM	SDS 1	SWM-SM 50	0.3	0.3
Note: Clean the drilled hole with compressed air before inserting the plug.					



Fastening surface:

Concrete  $\geq$  B25 or porous sand-lime bricks (KSL), solid sand-lime bricks (KSV)  
and solid brickwork with strength class  $\geq$  1.2

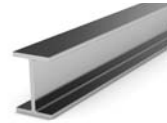
	Plug type	Drill bit $\phi$ / min. seat depth (mm)	Setting tool	Load (kN) F90	
Application area				Central tension	Tranverse load
Single clamp SAS	HMS 5/40	4 / 30	Torx "20"	0.15	0.15
Single clamp SAS	MMS-St 6/60	5 / 40	M 10	0.50	0.50
Tunnel clamp TSD	HMS 5/40	4 / 30	Torx "10"	0.15	0.15
Tunnel clamp TSD	MMS-St 6/60	5 / 40	M 10	0.50	0.50
C-rail	MMS-P 7.5/45	6 / 40	Torx "40"	0.50	0.50
Protective cable duct	MMS-P 7.5/45	6 / 40	Torx "40"	0.50	0.50
G-duct	MMS-P 7.5/45	6 / 40	Torx "40"	0.50	0.50
Cable rails	MMS-P 7.5/45	6 / 40	Torx "40"	0.50	0.50
Hermann clamp	MMS-P 7.5/45	6 / 40	Torx "40"	0.50	0.50
Note: Clean the drilled hole with compressed air before inserting the plug.					



## Fastening surface:

**Gas concrete with strength class  $\geq$  P3.3**

Application area	Plug type	Setting tool	Load (kN) F90		
			Central tension	Tranverse load	
Single clamp SAS	PBD M6x10	EWP 6x10 SDS	0.35	0.35	
Tunnel clamp TSD	PBD M6x10	EWP 6x10 SDS	0.35	0.35	
C-rail	PBD M6x10	Do not drill! Use the setting tool for the installation.	EWP 6x10 SDS	0.35	0.35
Protective cable duct	PBD M6x10		EWP 6x10 SDS	0.35	0.35
G-duct	PBD M6x10		EWP 6x10 SDS	0.35	0.35
Cable rails, light	PBD M6x10		EWP 6x10 SDS	0.35	0.35
Hermann clamp	PBD M6x10		EWP 6x10 SDS	0.35	0.35
Cable rails, heavy (M10)	PBD M10x10	EWP 10x10 SDS	0.80	0.80	



## Fastening to steel supports\*

As an alternative to using plug fasteners, the profile rails, single clamps, multi-cable supports or protective cable ducts can also be fastened using spring steel clips.

Spring steel clips may only be loaded to a maximum of 25 N.

With respect to functional integrity duration, the steel support must be protected by at least the same degree as the cables.



## Fastening to wooden beams\*

As an alternative to using plug fasteners, the profile rails, single clamps, multi-cable supports or protective cable ducts can also be fastened to wooden beams using steel woodscrews. With respect to fire requirements, the minimum cross-section dimensions of the wooden beams must be properly dimensioned according to the functional integrity duration of the cable. The screw-in depths and edge spacings must be increased for E30 by 30 mm and by 90 mm for E90.

## Fastening to post-and-beam/drywall constructions

Unfortunately, this is not possible since drywalls can break and fall down on the side facing the fire.

\* The latest General Appraisal Certificates (ABPs) must no longer include expert's opinion on fastening to steel supports or wooden beams. Please see the previous MPA Appraisal Certificates which can still be found on our website for your evaluations.

# K6X5 / KDM PLUG

## Assembly instructions

### Assembly instructions for K6x5 plugs with type SAS ... D single clamp



#### Drilling

Embedment depth: 32 mm

Drill bit: SDS1

Purge the drilled hole.

Insert the pre-assembled clamp and plug into the drilled hole.



#### Driving in

Place the setting tool "SMu 6-SM" or "SDS1" onto the "SDS1" drill bit.

Drive the plug into the drilled hole using the drill hammer.

### Assembly instructions for KDM plug with Hermann clamp



#### Drilling

Embedment depth: 32 mm

Drill bit: SDS1. Purge the drilled hole.

Insert the plug with a nut and washer through the Hermann clamp and into the drilled hole.



#### Driving in

Place the setting tool "SWM-SM 50" onto the "SDS1" drill bit.

Drive the plug into the drilled hole using the drill hammer.

### Assembly instructions for KDM plug with 2970/2 SLD profile rail



#### Drilling

Embedment depth: 32 mm

Drill bit: SDS1

Purge the drilled hole.

Insert the plug with a nut and washer through the profile rail and into the drilled hole.

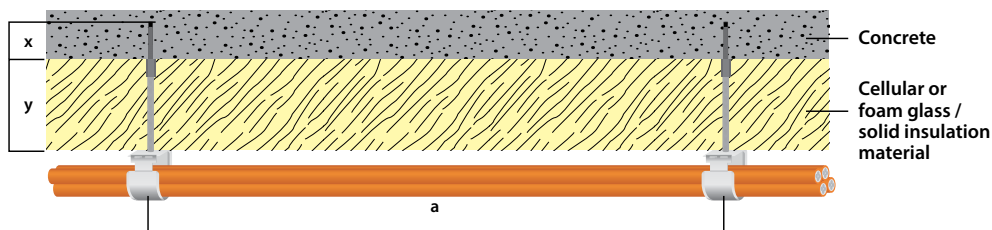
#### Driving in

Place the setting tool "SWM-SM" or "SWM-SM 50" onto the "SDS1" drill bit. Drive the plug into the drilled hole using the drill hammer.

### Assembly instructions for insulation bridging set for insulated ceilings, thickness > 100 mm

Embedment depth in concrete (x): minimum of 70 mm, plus thickness of non-flammable insulation (y). Borehole depth = x+y.

Drill diameter: 6 mm



**x** = Embedment depth in concrete

**y** = Thickness of insulation

**a** = Distance between "Hermann" clamps, SAS clamps, other: see pages 32 to 41.

The distances are the same as for direct mounting on ceilings (or walls).

# MMS-ST / HMS INSTALLATION BOLT

## Assembly instructions

### Assembly instructions for MMS-ST installation bolt and type SAS ... D single clamps



#### Drilling

Embedment depth: > 40 mm  
Drill diameter: 5 mm  
Purge the drilled hole!



#### Driving in

with M10 socket wrench



#### Screw on

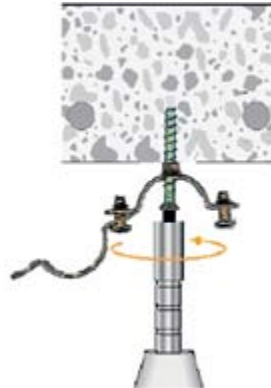
the clamp

### Assembly instructions for HMS installation bolt and type SAS ... D single clamps



#### Drilling

Embedment depth: > 30 mm  
Drill diameter: 4 mm  
Purge the drilled hole!  
Insert HMS bolt through SAS clamp  
up to the drilled hole.



#### Driving in

with T-Drive „20“

# MMS INSTALLATION BOLT / PBD PLUG

Assembly instructions

## Assembly instructions for MMS installation bolt and Hermann clamp / profile rail



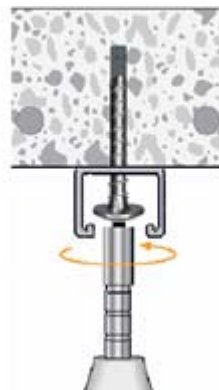
### Drilling

Embedment depth: > 40 mm

Drill diameter: 6 mm

Purge the drilled hole!

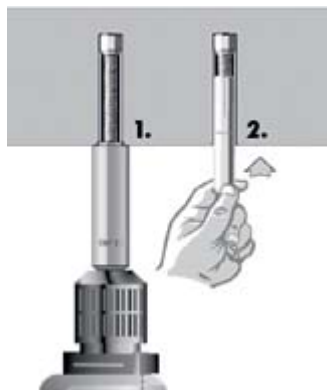
Insert MMS bolt through Hermann clamp / profile rail up to the drilled hole.



### Driving in

with T-Drive „40“

## Assembly instructions for PBD gas concrete plugs



1. Use the setting tool and hammering action of the drill hammer to drive the tapered bolts into the gas concrete.  
Do not pre-drill.
2. Insert the splaying sleeve.



3. Use the setting tool and hammer action of the drill hammer to drive the splaying sleeve into place.
4. Tighten the component into place until the blue marking becomes visible.

## Can cables with functional integrity be installed directly in the earth?

The standards pertaining to the installation of cables of these types is given in DIN VDE 0276-604 and DIN VDE 0266.

Neither DIN VDE 0276-604 nor DIN VDE 0266 contains provisions for installing these cables directly in the earth or in water. However, it is permitted to install them in cable conduits as long as no water can collect in the conduits.

## Are cables with functional integrity also resistant to UV light?

The UV light resistance of a cable chiefly depends on the colour of the external sheathing. Cables that are conceived for outdoors applications and exposure to sunlight are generally fitted with a black sheathing. Datwyler cables with red or orange sheathing are UV-stabilised but not protected against excessive exposure to sunlight. They should be protected using a duct, conduit (with consideration of the general test certificate) or coated externally using water-soluble dispersion paint.

## Is it possible to repair the external sheathing of any of the following halogen-free cables or lines, or cables with functional integrity?

Just as with PVC-insulated cables and lines, zero-halogen cables and lines can be repaired using blow-out patches. Datwyler Keram cables with integrated functional integrity did not exhibit premature failure in tests using connecting joints.

Since the cable sheathing, filling material and parts of the conductor insulators are destroyed by fire and only the ceramic coating directly on the copper wire insulates it against fire, the external sheathing of Datwyler Keram cables can be repaired using blow-out patches. Any metallic components of the blow-out patch must be removed after the tubing has shrunk into place.

However, it makes sense to use a zero-halogen blow-out patch.

## Do zero-halogen cables or lines, or cables with integrated functional integrity have better fire load properties than PCV-insulated cables?

No.

Depending on the manufacturer, cable type and standard, there may be fluctuations.

When comparing similar types of cables, the fire-load values of zero-halogen cables is even usually quite a bit lower.

The largest differences can be observed when comparing various cables with functional integrity. Since ceramics are used in the Datwyler cables, their fire load characteristics are up to 50% lower than those of comparable cables.

The confusion pertaining to the supposed higher fire load properties of zero-halogen cables originated in a VdS data sheet (VdS 2134:1999-01 and its predecessor). Since the zero-halogen sheathing cable NHXMH was not included with this data sheet, readers mistakenly compared the PVC-sheathed cable of type NYM with the zero-halogen cable of type NHXHX with 0.6/1 kV (intended for containment applications in nuclear power plants).

The correct comparison here would have been between cables such as NYM 3x1.5 mm<sup>2</sup> (fire load: 0.44 kWh/m) and Datwyler NHXMH 3x1.5 mm<sup>2</sup> (fire load: 0.33 kWh/m).

## What is the maximum tensile loading capacity for zero-halogen cables/lines or for cables with functional integrity?

NHXMH	acc. to DIN VDE 0298 - 3:	50 N / mm <sup>2</sup> core cross-section
N2XH/CH, (N)HXH/CH E30-E60, (N)HXH/CH E90	acc. to DIN VDE 0276-604:	50 N / mm <sup>2</sup> core cross-section
J-H(St)H...BD, JE-H(St)H...BD FE180 E30-90	acc. to DIN VDE 0891 - 5:	depending on number of cores, span length and temperature

## What is the maximum permissible operating temperature at the cable for zero-halogen cables/lines or cables with functional integrity?

(N)HXLHXÖ-J	acc. to Datwyler specifications:	- 25°C to + 90°C moving air
	acc. to Datwyler specifications:	- 40°C to + 90°C stationary air
NHXMH, H07Z-U/R, H05 / H07Z-K	acc. to DIN VDE 0298 - 3:	+ 5°C to + 70°C moving air
	acc. to DIN VDE 0298 - 3:	- 40°C to + 70°C stationary air
N2XH/CH, (N)HXH/CH E30-E60, (N)HXH/CH E90	acc. to DIN VDE 0276-604:	- 5°C to + 90°C moving air
	acc. to Datwyler specifications:	- 25°C to + 90°C stationary air
Dätwyler FE 180/E30-CL Keram	acc. to Datwyler specifications:	- 5°C to + 90°C moving air
	acc. to Datwyler specifications:	- 25°C to + 90°C stationary air
J-H(St)H..., JE-H(St)H... E30-E90	acc. to DIN VDE 0891 - 5:	- 5°C to + 50°C moving air
	acc. to DIN VDE 0891 - 5:	- 30°C to + 70°C stationary air

The installation temperatures are the same as the temperatures for moving air. These temperatures apply for the cable itself but not for the surroundings. If the temperature of the cables is low, warm them up. Make sure that the temperature never drops below the lowest permissible temperature during the entire installation.

## How does safety cable behave in tunnels or subterranean garages?

Given that the following auxiliary conditions are met, the functionality of our zero-halogen cables and lines will not be compromised or negatively affected by the effects of water or water-salt solutions (road salt) nor from acids resulting from automotive exhaust gases:

- There is no damage to the cable sheath.
- No water can penetrate into the cable in the longitudinal direction.
- The cables have been installed in a protected state (e.g., in a closed concrete duct with a sand bed so that the cables are not permanently surrounded by water or situated in pipe systems where water can flow).

Datwyler can guarantee the full range of functions for its cables if the cables are stored in the following media or under the following conditions:

- Storage at almost 100% air humidity
- Storage in stagnant water, temperature range: + 5°C up to a maximum of +50°C.

## **How is it possible that a terminal lug / crimped connector with the same cross-section as a given conductor is actually too large for the conductor?**

For multicore copper cables with diameters larger than 16 mm<sup>2</sup>, the round copper wires are deformed (compressed) and fill out the intermediary spaces between the cores. Thus, the cable diameter decreases effectively. However, the cable cross-section is not changed and remains equivalent to the sum of the cross-sections of the various copper cores.

For this reason, the terminal lugs or crimped connectors should be dimensioned according to the diameter of compressed copper cable or suitable reducers should be used.

## **Is it possible to install high-current cables together with low-current cables?**

According to DIN 4102-12, the functional integrity is not affected by combining high-current and low-current cables in an installation. However, the regulations given in the DIN VDE provisions apply.

## **Is it permissible to apply coatings to Datwyler safety cables?**

Datwyler safety cables can be coated with water-thinnable dispersion paint. For cables with functional integrity or fire detector cables, it is recommended to confer first with the responsible authorities since the orange or red signal colour may be concealed.

## **Is it permissible to install safety cables directly in concrete?**

According to DIN VDE 0276 Part 604 Appendix A Section 3.1 (contains regulations pertaining to the application areas for low voltage cables with improved fire properties), safety cables may only be installed indoors in the air or embedded in concrete.

According to HD 604 Part 5 Section 5.1.2, the cable also has to be protected against mechanical damage.

## **Is the C-conductor of a concentric cable [(N)HXCH] a shield?**

The concentric conductor in cables is not a shield in the electrical sense and thus not comparable with telecommunications or IT applications. It only provides a mild shielding effect. This concentric conductor is defined in DIN VDE 0276 Part 604 Section 5 Item 3.3.5.

## Can zero-halogen cables and lines be fitted with joints?

Zero-halogen cables and lines can be fitted with joints just as with PVC-insulated cables and lines. However, it makes sense to use a zero-halogen joint. Certified Datwyler joints are available for Datwyler Keram cables with functional integrity.

## Can zero-halogen cables and lines be connected to PVC-insulated cables and lines?

Seen from a purely electrical viewpoint, yes. However, the resultant cable will not fulfil the requirements in DIN VDE 0482-267 for zero-halogen cabling. It will no longer be possible to guarantee minimal fire propagation in accordance with DIN VDE 0482-266 and minimal smoke density in accordance with DIN VDE 0482-1034.

## What does “NHMH or zero-halogen cable without improved behaviour in case of fire” mean? (Datwyler: NHXMH)

In contrast to NHXMH, NHMH cables do not fulfil the test criteria for minimal fire propagation in accordance with DIN VDE 0482-266-2-4, nor do they comply with the requirements for low smoke density as stipulated by DIN VDE 0482 Part 1034. The danger with this cable type is that it can exhibit a fuse effect and produce dense smoke.

NHMH is therefore not suitable for applications requiring compliance with DIN VDE 0100-482 in rooms or locations containing irreplaceable goods of high value nor in areas where people congregate as stipulated in the pertinent VdS loss prevention provision (VdS 2025 – Cable and Line Systems).

## What is the difference between flame-retardant and minimal flame propagation) or, in other words, what does “improved behaviour in cases of fire” mean?

**Datwyler: J-H(St)H, NHXMH, N2XH/CH**

**Datwyler Keram: JE-H(St)H/HRH...BD FE180 E30-E90, (N)HXH/CH E30-E60 / E90**

When one speaks of a “flame-retardant cable”, this means that this cable can, depending on its diameter, self-extinguish any flames within one minute after the fire source moves or is moved away (DIN VDE 0482-332-1). DIN VDE defines this as “flame resistant”.

However, since “flame-resistant” cables may still have very high fire propagation properties, this laboratory test on its own is not particularly relevant for real-world applications and says nothing of the actual fire properties of the given cable.

On the other hand, minimal fire propagation indicates that the fire source will not propagate even after 20 or more minutes of exposure to the fire (DIN VDE 0482-266-2-4). Furthermore, groups of cables containing a specific volume of non-metallic materials (in VDE 0482-266-2-4 = 1.5 l) with a length of 360 cm are tested under real-world conditions.

## What is the meaning of functional integrity E30 or E90?

This refers to functional integrity as stipulated in DIN 4102 -12. Since functional integrity is only maintained when the functionality of both the cable and installation system remains integral, this test always applies to the entire system.

On their own, neither the cable or installation system offer functional integrity. Furthermore, it is essential to use certified plugs and bolts.

## Is it permitted to re-use cables with functional integrity following a fire?

**Datwyler JE-H(St)H/HRH...BD FE180 E30-E90 Keram,  
(N)HXH/CH E30-E60 / E90 Keram**

All safety cables must be replaced following any type of exposure to a fire.  
Cable systems with functional integrity must be re-certified from a qualified appraiser.  
Cables with functional integrity are by no means absolutely fireproof.

## What happens when cables with functional integrity are exposed to high-pressure water in sprinkler systems during fire? **Datwyler (N)HXCH E90 Keram**

Datwyler safety cables (N)HXCH E90 Keram of size 16 mm<sup>2</sup> and above have been tested in accordance with VdS provision 2344 (1999-02) for this application and have been certified by VdS.

## Are cables with functional integrity suitable for applications where the surrounding temperatures are permanently > 100 °C?

No. Cables offering functional integrity are not silicon lines and cannot be compared with them.  
The permissible temperature range with stationary air for conductors is  
-25 °C to + 90 °C for (N)HXH FE180/E30-E60 and  
-30 °C to + 70 °C for JE-H(ST)H...Bd FE180/E30-E90

## What is the proper method of installing vertical lines of cables with functional integrity that extend across multiple storeys?

According to DIN 4102 Part 12, this type of installation requires that cables are supported at a spacing of up to 3500 mm. This can be done by installing "meandering" lines, using S90 ceiling fire bulkheads or encasing the lines in WUM clips.

## What does the "G" number indicate with respect to functional integrity?

For supply lines to sprinkler pump motors, the VdS provision for sprinkler systems (VdS CEA 4001 9.8.2.2 f) stipulates an additional test of the functionality of the cable when exposed to water during a fire (VdS provision 2344).  
If a cable passes this test, it is assigned an approval code that begins with G.  
Datwyler (N)HXCH E90 Keram 16 mm<sup>2</sup> and larger: Approval code G-4980024.

## How should cable systems be assessed following flood damage?

With the exception of buried cables with longitudinal waterproofing, we suggest the following recommendations for our cable types:

Transverse watertightness:

If the cable is submerged in water for approx. 1 month, this is considered to be a short-term exposure. According to DIN VDE, this is not equivalent to being installed under water. With respect to the transverse watertightness, as long as the cable sheath is not damaged, there is no need to suspect that the cable has been compromised. Important: exposure to chemical substances (e.g., oil) from neighbouring rooms must be considered separately.

Longitudinal watertightness:

As with NYY, our cables are not watertight in the longitudinal direction! As a result of the capillary effect, water can penetrate the cable to a point that is even above the effective water level.

It is not possible to fully remove this water from the cable.

However, the positive results of an insulation measurement that was performed indicate that the cable can still be used.

It is not possible to reach any further conclusions with respect to the product life.

E30-E90 systems with functional integrity:

With respect to transverse watertightness, the same applies as for the cable types given above.

With respect to longitudinal watertightness, the functional integrity (JE-H(St)H E30-E90, NHXH/CH E30, NHXH/CH E90) may be heavily compromised. In areas where water collects in cables, the cable may burst open as a result of boiling/vapourising water and thus cause a short circuit.

To continue to ensure safety in these functional integrity classes, we recommend replacing the cable. (Furthermore: This hazard also exists in electrical ducts containing conventional cables since fire temperatures of above 100 °C are permitted here.)

## What does ABP mean?

ABP is a German abbreviation for a "General Appraisal Certificate" from building authorities. According to building laws and regulations, cable systems with integrated functional integrity must be supplied with a "General Appraisal Certificate". Otherwise, approval is required on a case-by-case basis from the highest building authority.

What is the bending radius for zero-halogen cables/lines or for cables with functional integrity?

NHXMH		acc. to DIN VDE 0298 - 3	4 x external diameter
N2XH/CH, (N)HXH/CH E30-E60 / E90		acc. to DIN VDE 0276-604	15 x external diameter (single core) 12 x external diameter (multicore)
J-H(St)H..., JE-H(St)H... E30-E90		acc. to DIN VDE 0891 5:	7.5 x external diameter
(N)HXSLHXÖ ≤ 12 mm		permanently installed	3 x external diameter
(N)HXSLHXÖ > 12 mm		permanently installed	4 x external diameter
		When bent once	
(N)HXSLHXÖ ≤ 8 mm		permanently installed	2 x external diameter
(N)HXSLHXÖ > 8 -12 mm		permanently installed	3 x external diameter
(N)HXSLHXÖ > 12 mm		permanently installed	4 x external diameter

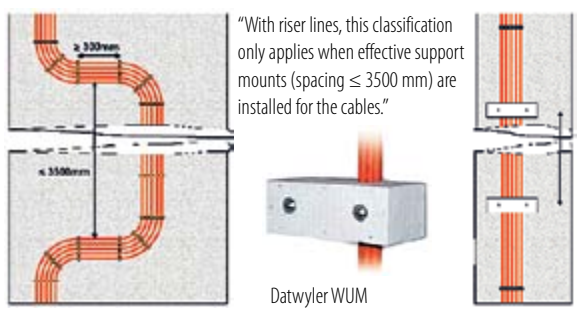
The prerequisite here is that the cable is bent evenly without any kinks.

What is the proper method of installing vertical lines of cables with functional integrity that extend across multiple storeys?  
Meander-shaped installation or effective support mount WUM

According to DIN 4102-12 Section 8.3, the classification of functional integrity only applies when effective support mounts (spacing  $\leq 3,500$  mm) are installed for the cables. An example of an effective support mount is shown in the figure below (right side). Another method is to use an appropriately classified ceiling fire bulkhead or a tested and certified clip construction. Only authorised test institutes are permitted to evaluate mount designs that differ from the one shown in the figure below (left side).

The figure below (left) displays a meander-shaped cable installation, with the cable system leading horizontally every 3,500 mm and fastened by two clips at a spacing of max. 300 mm. The cable must run for at least 300 mm in the horizontal direction. The bending radii must be included in the calculation.

When using Datwyler WUM (effective support mounts), it is possible to eliminate the need for the horizontal cable routing since this has been certified by a recognised test institute.



Installation using only single or strap clamps:  
According to DIN 4102-12 Section 8.3, the only test results that apply to vertical cable systems are those for separately installed cables on ceilings using single clips. A certified strap clamp can be used as alternative means of fastening the cables. The spacing of the strap clamps is the same as the spacing used to install cables separately using single clips. (Using standard installation techniques, this corresponds to a fastener spacing of 300 mm).

Using Datwyler, SAS single clips or strap clamps of type B...D, it is possible to achieve fastener spacings of up to 1.2 m with bundled cable weights of up to 2.5 kg/m. For more information, refer to our "Optional Installation Techniques".

## How does DIN 4102-12 stipulate fastening single-core high-current cables with integrated functional integrity?

The cable is subject to DIN VDE 0266 and this standard refers to DIN VDE 0276-604 for applications. According to section 5.5.3, single-core cables may only be installed separately or in bundled systems (L1,L2,L3). A system of bundled cables can be treated in the same manner as multicore cables. When installing single-core cables, only use clips made of plastic or non-magnetic metals. Steel clips may only be used if the magnetic circuit is not closed. According to DIN 4102-12, only the systems listed in the "General Test Certificate" may be used.

Due to their low melting points, clips made of plastic or aluminium are not approved for applications requiring functional integrity. Our Datwyler (N)HXH/CH E30-E60 / E90 Keram safety cable has been approved for three-phase cable group installations and is expressly listed in the general test certificate.

## Along escape routes, LAR (German code of practice) stipulates that fire-safe fasteners must be fitted for lines installed between floor slabs and suspended ceilings. Which products are suitable for this application?

Datwyler Hermann clips and E0 multi-cable supports combine the simple yet flexible assembly of multi-cable supports with the high requirements of fire-safe installations. For these applications, Hermann clips can be subjected to cable weights of up to 10 kg/m with a fastener spacing of 600 mm. In contrast to functional integrity applications, if the distance is shortened, the cable weight can be increased accordingly. On the other hand, fastener spacings of up to 800 mm are possible with reduced loads. The fireproof plugs are used as the fasteners in these applications.

## DIN 4102-12 provides information on the thermal effects that cause the electrical resistance to increase in copper lines. How should this be taken into account when dimensioning cables?

For cable systems with integrated functional integrity, DIN 4102-12 stipulates that, if no special measurements are performed, the conductor temperature can be approximated as the fire room temperature for the purpose of choosing an appropriate cable size. (E30: 860 °C and E90: 1,000 °C) In measurements of the copper conductors in cables, Datwyler has determined that the actual temperatures in the copper conductors are significantly lower. For Datwyler cables we have therefore developed a simple calculation program for the line voltage drop that also takes the fire compartments into consideration. The max. permissible line voltage drop also has a large effect, since during fires it depends only on the electrical consumers and can amount to 5% or more. (Doubling the voltage drop halves the cross-section!)

**Please download our cross-section calculation tool.**

Table with material stabilities at room temperature

Materials	Stability at room temperature of 23 °C
5% + 30% formaldehyde	Good to very good over short term
5% + 30% acetic acid	Good to very good over short term
Methanol	Good to very good over short term
20% soda brine	Good to very good over short term
NaCl 10% common salt solution	Good
Chlorine water 3%	Conditional to good
Ammonia (gaseous/aqueous)	Average to good/The material is not destroyed
Hydrocarbon	Conditional to average over short term
Water resistance	
(water bath storage at 70 °C)	Average
Water resistance	
(water bath storage at 23 °C)	Good to very good
Storage with air humidity close to 100%	Very good

Fore more extensive information and aids such as calculating tools, manuals, forums, MLAR, approvals and more, visit us at [www.cablng.datwyler.com](http://www.cablng.datwyler.com)!

Typos:

Dear reader,  
after making extensive changes to this manual, very likely a few typos  
will have crept into this document. We would be very glad to receive any feedback  
from you on typos or other mistakes that you may have found!

Subject to change without prior notice.

*Your Datwyler team.*

## Preventive fire protection and system circuit integrity

The co-ordinated and licensed Datwyler products enable optimal system approaches and guarantee quality, cost-efficiency, saving of time and security.



300 mm

**Standard laying technics with single clamp** (of different manufacturers)



600 mm

**Standard laying technics with strap clamp with trough** (of different manufacturers)



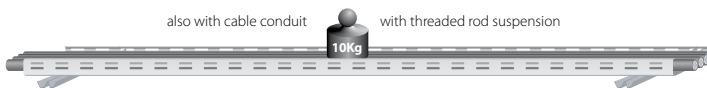
600 / 800 mm

**Hermann clamp:** bundling, e.g. 30 cables 3x1.5mm<sup>2</sup>



600 / 800 / 1200 mm

**Single clamp**  
**Strap clamp**



1200 mm

**Standard cable tray** (of different manufacturers)



1500 mm

**Datwyler cable tray without threaded rod suspension**  
**for wall and ceiling installation.**

**Optional laying techniques with different cable tray manufacturers.**

Datwyler E30-E90 support systems

1. Background Information

2. By Installation Type

3. By Cable Type

4. Product Range

5. Assembly Instructions

6. FAQ

**SWITZERLAND****Dätwyler Cabling Solutions AG**

Gotthardstrasse 31  
6460 Altdorf  
T +41 41 875-1268  
F +41 41 875-1986  
info.cabling.ch@datwyler.com  
www.cabling.datwyler.com

**GERMANY****Dätwyler Cables GmbH**

Auf der Roos 4-12  
65795 Hattersheim  
T +49 6190 8880-0  
F +49 6190 8880-80  
info.cabling.de@datwyler.com  
www.cabling.datwyler.com

**Dätwyler Cables GmbH**

Lilienthalstraße 17  
85399 Hallbergmoos  
T +49 811 998633-0  
F +49 811 998633-30  
info.cabling.de@datwyler.com  
www.cabling.datwyler.com

**AUSTRIA****Dätwyler Cables GmbH  
Office Austria**

Liebermannstraße A02.403  
2345 Brunn am Gebirge  
T +43 1 8101641-0  
F +43 1 8101641-35  
info.cabling.at@datwyler.com  
www.cabling.datwyler.com

**UNITED ARAB EMIRATES****Datwyler Middle East FZE**

P.O.Box 263480  
Office No. 601, 6th Floor, Jafza 19 View  
Jebel Ali Free Zone  
Dubai  
T +971 4 8810239  
F +971 4 8810238  
info.cabling.ae@datwyler.com  
www.cabling.datwyler.com

**Datwyler Cabling Solutions LLC**

Unit 1004 & 1005, 10th Floor, IB Tower  
Business Bay  
Dubai  
T +971 4 4228129  
F +971 4 4228096  
info.cabling.ae@datwyler.com  
www.cabling.datwyler.com

**CHINA****Datwyler (Suzhou)  
Cabling Solutions Co., Ltd.**

No. 218, East Beijing Road  
Taicang Economic Development Zone  
Jiangsu Province, 215413  
T +86 512 3306-8066  
F +86 512 3306-8049  
info.cabling.cn@datwyler.com  
www.cabling.datwyler.com

**SINGAPORE****Datwyler (Thelma)  
Cables+Systems Pte Ltd**

30 Toh Guan Road # 01-01A  
608840 Singapore  
T +65 68631166  
F +65 68978885  
info.cabling.sg@datwyler.com  
www.cabling.datwyler.com